

VANTRUE

Element 2 Pro **E2 Pro**

USER MANUAL **V1.1**



vantrue.com

truly driven.



Contact Us



Join Our Community



 [instagram.com/vantrue_official/](https://www.instagram.com/vantrue_official/)



 ID: @860fnbxk

CONTENTS

01	What's in the box?	1
02	Camera Overview	2
03	Installation	6
04	Basic Operation	12
05	Specifications	35
06	Safety Warnings	37
07	Warranty & Support	38

Safety Warnings:

- Before using the camera for the first time, please read the product manual carefully to ensure correct operation.
- The dash cam needs to be connected to the power supply to work properly.
- To ensure driving safety, please do not operate the device or watch the driving video via cell phone during driving.
- This product needs to be inserted into the Micro SD card.
- Please do not disassemble or repair the dash cam without authorization. If the camera malfunctions, please contact VANTRUE official customer service.
- Please avoid installing the dash cam in a position that will block the driver's view.
- Please keep away from high temperature and humid environment to ensure the normal operation of the device.
- In order to improve the product experience, the product firmware will be updated from time to time, you can download the latest version to enjoy the latest features as needed.
- Please do not install the dash cam in front of the passenger to avoid safety hazards caused by the device falling off.
- Please note that the use of wireless CarPlay or Android Auto may affect the connection of the Vantrue APP.
- Please use this product reasonably in compliance with relevant laws and regulations.

1. What's in the Box?



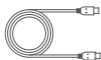
A. Vantrue E2 Pro Dash Cam



B. GPS Adhesive Mount



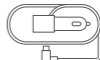
C. Rear Camera



D. Cable for Rear Camera(19.7ft)



E. Type C Data Cable (3.3ft, for transferring files only)



F. Car Charger with Built-in Type C Cable(11.5ft)



G. Adhesive Stickers



H. Electrostatic stickers



I. Dust-Free Cloth



J. Quick Start Guide



K. Warning Stickers



L. Cable Clips



M. Crowbar

Optional Accessories



N. CPL Filter



O. Hardwire Kit Cable

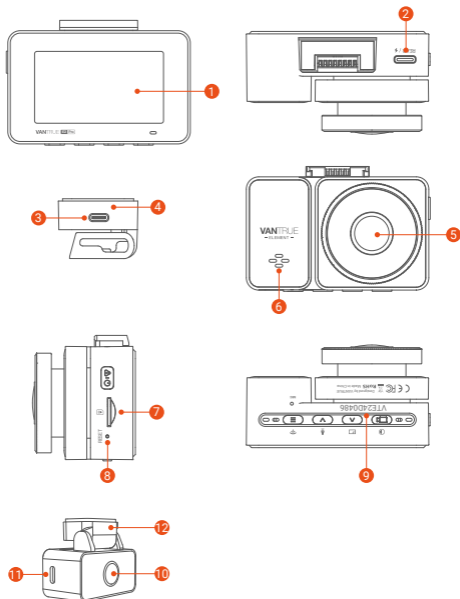


P. Wireless Controller



Q. LTE Modules

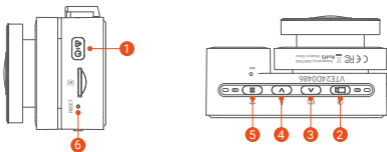
2. Camera Overview





No.	Name	Description
1	Screen	2.45" LCD Screen
2	Type C Port for Rear Camera	Connect rear camera here. Connect data cable to transfer files to PC.
3	Power Port	Connects to Type C cable or car charger for external power supply


4	GPS Mount	Provides GPS logging for your videos.
5	Front Camera	Front facing camera for video recording road events.
6	Microphone	Records clear audio with the video footage
7	Micro SD Card Slot	Supports Micro SD Card up to 512GB in FAT32, Class 10
8	Reset Button	Short press to restart the camera
9	Serial Number	Serial number for warranty registration
10	Rear Camera	Records road events behind the car
11	Type C port on Rear Camera	Connection port for rear camera cable


Buttons and Functions




No.	Buttons	Instruction
1	 Button	Power ON/OFF; long press to turn on/off the dash cam; short press during recording to enter event recording mode; short press to capture pictures during event recording

2  Button During video recording, you can long press to turn off the screen, and short press to stop recording and enter standby mode; you can confirm the selected option in the menu; when playing back a file, press the button to play/pause the file

3  Button During video recording and standby, long press to quickly enter parking mode, and short press to turn on/off the microphone; in menu settings, long press to scroll through menu options, and short press to display the next menu option; during file browsing, long press to scroll to display file, short press to display the next file; in playback mode, short press to pop up the delete file menu; in WiFi mode, press any key to exit WiFi

4  Button During video recording and standby, short press to switch the video window; in menu setting and file browsing, short press to display the previous option, long press to scroll up to display options; in playback mode, short press to fast forward; in WiFi mode, press any key to exit WiFi

5  Button During video recording and standby mode, long press to turn on/off WiFi; In standby state, short press to enter the menu or return, and long press to turn on or off WiFi; in WiFi mode, press any key to exit WiFi

6 Reset Button Short press to restart the camera

LED Indicator



LED	LED Status	Description
REC	Steady green light	In standby status, or the REC light is set to off
	Blinking green light	Camera is recording

Screen Overview

Screen Overview Callouts:

- Time Lapse On**
- Collision Detection ON**
- Motion Detection ON**
- 1080P Low Bitrate Recording ON 15FPS**
- 720P Low Bitrate Recording ON 15FPS**
- Low Framerate Parking Mode**
- Voice control is off** / **Voice control is on**
- Wi-Fi is Turned off**
- 2.4G Wi-Fi is On**
- 5G Wi-Fi is On**
- 2.4G Wi-Fi is Connected**
- 5G Wi-Fi is Connected**
- GPS Signal Connecting** / **GPS Signal Locked**
- G-Sensor OFF** / **G-Sensor ON**
- Mic is ON** / **Mic is OFF**
- NO memory card inserted** / **Memory card inserted**
- 4G LTE Signal**
- Privacy Mode ON**
- Loop recording OFF**
- Loop recording for 1 min**
- Loop recording for 3 mins**
- Loop recording for 5 mins**
- 35 MP/H** (Recorded driving speed)
- Current Date and Time**: 00:00:37 - 14:39:07 - 11-02-2025
- Video Resolution**: 4K+1440P 30FPS
- Snapshot**
- Parking Mode Recording Time (Current Clip)**
- Remote control is connected**
- Icons for Indicating Buttons**

3. Installation

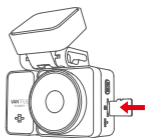
Installation Notes:

- Before installing the front and rear dash cam, clean the installation areas with cleaning tools.
- We recommend applying a static sticker before mounting the front camera. Attach the front camera onto the static sticker afterward.
- When installing the dash cam bracket, press it firmly against the windshield after attachment to remove any air bubbles between the bracket and the glass. This will enhance the adhesion strength.
- After completing the installation of the car charger and rear camera, use the included cable clips to manage the power cable and rear camera cable neatly.
- Upon first use, we recommend formatting the memory card to reduce potential recording issues.

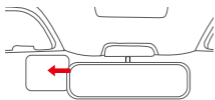
3.1 Installing the camera onto your windshield



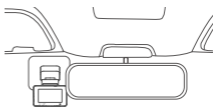
① Installation of camera mount



② Install MicroSD Card



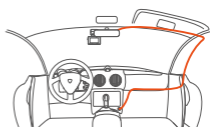
③ Apply Static Sticker



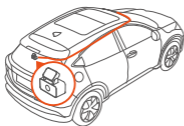
④ Mount the Dash Cam



⑤ Connect the Car Charger



⑥ Power On and Route the Wires



⑦ Install Rear Camera and Route Its Cable

3.2 APP Download

--APP Download

Please scan the QR code for the relevant version below to download the app and install it. Search for the "Vantrue" app in App Store or Google Play Store to find the app and then download and install it on your phone.

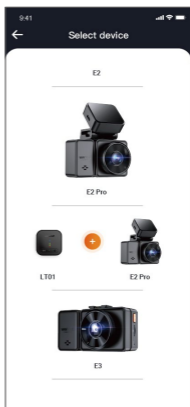
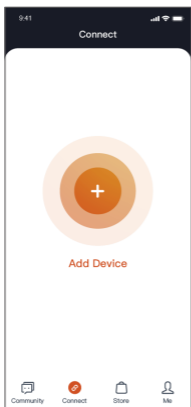


--Add a Device

Before connecting the dash cam to the Vantrue APP, please verify that the WiFi function on the device is turned on.

If the Wi-Fi is turned off, you can activate it by holding down the shortcut button, using the voice command "Turn on Wi-Fi," or going to Basic Settings → WiFi option in the camera settings.

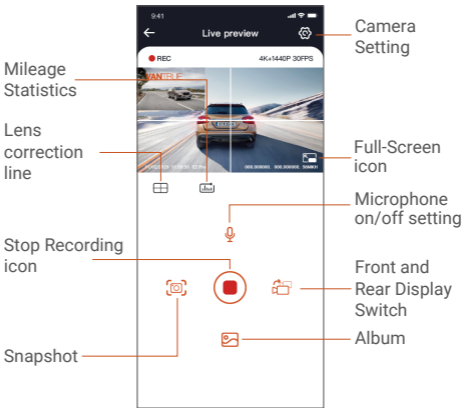
Once the Wi-Fi is active on your E2 Pro, tap Add a Device in the app, select the Element series, choose E2 Pro, confirm the corresponding Wi-Fi name, and then tap Confirm to connect.



Notes:

- The default password is for initial login only. To ensure security, change it immediately after first login to prevent unauthorized access.
- The default Wi-Fi password is 12345678. If you forget your custom password, reset the device to restore the default Wi-Fi password.

3.3 App Operation



After entering the App's real-time preview, you can perform the following operations:

Video preview: After the app is successfully connected to the camera, enter the real-time preview page, click the full-screen icon or place the phone horizontally, and the real-time screen will automatically switch to the full-screen preview mode. Click the window switch icon to switch the front and rear video

windows, but only multi-channel dash cams can use this feature.

Video playback: The video and photo files recorded on the Micro SD card can be viewed in the app, and the video can be played back after clicking the file.

Video download: You can select the video or picture you want to download in the Micro SD card browsing interface or in the video playback area. After downloading the video, if you play it in the local file of the app interface, you can view the GPS track of the video.

Video snapshot: You can capture the current screen in the real-time preview interface of the app.

Mileage Stat: Tap to download your travel mileage. The information will be saved as an image or PDF within the app.



Lens Correction Lines: Use the precise crosshair to balance the lens and avoid tilted footage.

4. Basic Operation

4.1 Menu Settings

The E2 Pro has three main menus: Basic Settings, Advanced Settings, and File Browser.

Navigate through these menus to customize and operate your dash cam to your preference.

Press  the button to pause recording, then press the  button to access the settings.



Basic Settings



Advanced Settings



Files

A. Basic Settings

-Resolution: The E2 Pro can be configured to record from the front camera only, or from both the front and rear cameras simultaneously.

Front+Rear	4K+1440P 30FPS	✓
	1440P+1440P 30FPS	
	1440P+1080P 30FPS	
	1080P+1080P 30FPS	
	1080P+720P 30FPS	
	720P +720P 30FPS	
Front	4K 30FPS	✓
	2560x1440P 30FPS	
	1920x1080P 30FPS	
	1280x720P 30FPS	

- Loop Recording:** Default setting is 1 min. You can choose the options among 1/2/3 min and OFF.
- Privacy Mode:** Once enabled, video will be recorded in a 3-segment loop, automatically overwriting the oldest footage and retaining only the latest 3 segments. Enabling this feature will erase all existing files. Please save any important footage before activation.
- Audio Recording:** The default is ON. Set recording to on or off.
- HDR:** Default is on. HDR enables the camera to provide near-perfect exposure under different lighting conditions. You can choose to turn WDR on/off.
- Rotate Display:** Default is off. You can choose to flip the video screen up and down(180 degrees).
- Parking Mode:** You can choose the parking mode you need, including Collision Detection/Motion Detection/Low Bitrate Recording/Low Framerate Mode/OFF.
- Parking monitoring settings:** When used with parking surveillance mode, you can manage the following settings: Entry/Exit Mode, Parking Mode Camera Selection, low-light night vision in Parking Mode, Parking collision detection and Motion detection zones
- Wi-Fi:** You can choose Wi-Fi mode, view Wi-Fi information, etc. The Wi-Fi auto-on option means that the Wi-Fi will automatically turn off after 10 minutes of turning on. If you choose on, Wi-Fi will always stay on; if you choose off, Wi-Fi needs to be turned on manually.
- Voice Control:** The default sensitivity is Standard. Voice commands can be recognized after the option is turned on. You can choose options such as low sensitivity/high sensitivity/standard/off.
- Voice Content:** Voice recognition commands. You can use different commands to remote control the camera to work.

-Format Memory Card: Format all data on the memory card.

-Auto LCD Off: Set the time to automatically turn off the LCD display after no operation.

If you set the Auto LCD Off to 3 min, the camera's LCD screen will auto light off after 3 min but recording will continue. If the setup is Off, the screen will not turn off. You can choose the options among 30s, 1Min, 3Min and OFF.

-System Info: Check the current model, firmware version, and the Vantrue official website.

-Default Settings: Reset the device back to factory settings.

B. Advanced Settings

-Language: Available languages are English/Français/Español/Deutsch/Italiano/简体中文/한국어/русский/日本語/Türkçe/český.

-G-Sensor: Select the level of G-sensor you need, then you can set 3 directions (Front + Rear/Left + Right/Up + Down). The G-sensor value in each direction can be selected as 1/2/3/4/5/Off. The higher the sensitivity level, the easier it is to trigger event recording.

G-sensor is most sensitive when set to 5.

-Audio Noise Reduction: The default setting is on. It adjusts the audio effect of recording by dynamic noise reduction. You can choose to turn it on or off.

-Rear Mirror Mode: On by default. Can be turned off.

-HDR Timer: Default setting is Off. When it's on, you can choose when HDR is automatically turned on and off.

-Number Plate: Select the number or letter to be set. After setting, your license plate number can be displayed in the recorded video.

-Stamp: Enable or disable the watermark stamp on video and photos. The watermark stamp includes time and date label, VANTRUE label, license plate number, GPS location information, and speed label. All enabled by default.

-Time Lapse: The default value is disabled. You can choose to enable 1FPS/5FPS/10FPS.

-LTE Settings: Requires LTE module. Configurable options include: alert push mode, auto-upload of collision videos, upload file size, daily data limit, fatigue driving alerts, and speeding notifications.

-Mileage Static: On by default. Records GPS data; view and export logs via the Vantrue app.

-GPS Settings: GPS is enabled by default. GPS ON/OFF settings, speed unit settings, and GPS information are all set here.

-Format Reminder Setup: Select the reminder options: 15 Days, 1 Month, and Off. Default is off.

To prevent you from forgetting to format the memory card regularly, we have added a format reminder time setting. You can choose to be reminded after 15 days or 1 month, and calculate 15 days or 1 month from the set date. When the time is up, you can choose "OK" to format, or choose "Next."

Note: If you changing the format reminder option, the timing will restart as soon as the option is changed.

-Date/Time: There are two ways to set the time and date: 1. GPS automatic update; 2 Manual date/time setting. GPS automatic update is enabled by default.

- Daylight Saving Time: Off by default. When enabled, adjusts automatically.
*This feature is only available in North America, Europe, and Australia., if used in other regions, it may cause time errors.
- Time Format: Defaults to 24-hour in recordings. Can switch to 12-hour. Affects both screen and video timestamp.

- Also includes settings for date format and time zone.

-Device Sound: Set the volume of the device. The default volume level is 3, the lowest is 0, and the highest is 5.

-Prompt Tone: According to different situations, the dash cam is set with 5 kinds of prompt tones, which are power-on/off sound, keys sound, file locked sound, format sound, and abnormal stop recording reminder. All prompt tones are turned on by default.

-Frequency: Different countries have different frequencies. In order to avoid affecting the video, you can choose 50Hz or 60Hz frequency according to different regions.

-Certifications: You can view the certification information of E2 Pro camera.

C. Files

Review the video and photo files recorded by the camera.

-Event: Critical event videos detected by G-Sensor activity or manually locked by user, and all vibration locking video in parking monitor mode.

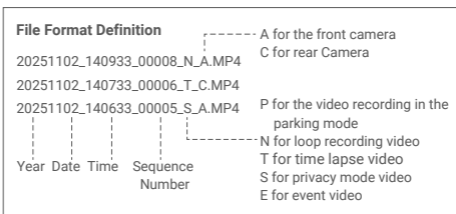
-Parking Videos: This folder stores parking surveillance recordings. Files are named like:
20300128_140633_00007_P_A.MP4

-Normal: This folder saves loop recording video and time-lapse video, and private files..

-Photo: Photos files.

-All Files: All the videos and photos recorded.

Note: The suffix A represents the files recorded by the front camera, the suffix C represents the files recorded by the rear camera.



4.2 Specifications

4.2.1 Loop Recording

The dash cam automatically starts loop recording after powering on. Videos are saved in the Normal Video folder, which uses up to 70% of total storage. Once full, new recordings overwrite the oldest files. This ensures continuous recording without manual cleanup.


Note:

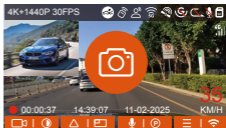
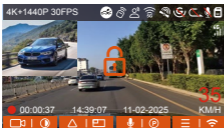
Requires a high-speed memory card. Format regularly to maintain performance.

Check recordings periodically to prevent important videos from being overwritten.

If disabled, videos will record in 20-minute segments until the card is full, then stop with a "Card Full!" warning. Locked videos will not be saved.

4.2.2 Event Recording

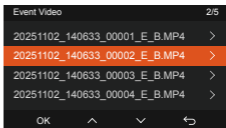
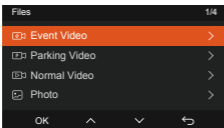
To save important footage during driving, you can either manually press the  button or let the dash cam automatically lock the video when a collision or strong vibration is detected. This prevents the video from being overwritten.



During locked recording:

Press the  button to capture multiple photos.

The video is automatically saved in the **Event Video folder**, and photos are stored in the Photo folder.



Note:

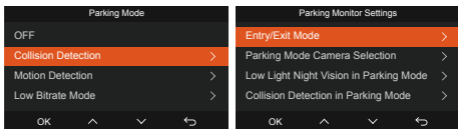
Sensitivity Settings: Adjust collision sensitivity under **Advanced Settings → Collision Sensitivity**. Choose **direction (front/rear, left/right, up/down)** and **sensitivity level**.

Storage Management: Emergency videos use up to 30% of the memory card. When full, new emergency files overwrite the oldest ones. Regularly back up important files to avoid loss.

Limitations: Auto-lock does not trigger if loop recording is turned off or if time-lapse recording is enabled. In these modes, only photos can be captured.

4.2.3 Parking Surveillance Settings & Modes

Adjust the parking surveillance settings and modes based on your vehicle, parking environment, and personal preferences.



Notes on Using Parking Mode:

Parking surveillance videos are saved in the Parking Video folder. Collision recordings are saved in the Emergency Video folder.

To ensure reliable operation in parking mode, use a VANTRUE hardwiring kit or another stable power supply.

Only the VANTRUE ACC hardwiring kit is recommended. Kits from other brands may not work properly due to differences in ACC detection pin positions.

In high-temperature environments (e.g., direct summer sunlight), we recommend using Collision Detection Mode. If the interior temperature exceeds 60°C (140°F), turn off the dash cam to prevent malfunction.

Time Lapse Recording and Parking Mode are mutually exclusive. Enabling one will automatically disable the other.

Parking Mode Activation/Deactivation Methods:

1. Auto Mode (Default)

- Without ACC (G-Sensor Mode): Enters automatically after 10 minutes of vehicle inactivity; exits automatically upon secondary collision detected by G-Sensor.
- With ACC connected: Enters automatically when the vehicle is turned off (ACC OFF); exits automatically when the vehicle is started (ACC ON).

2. ACC Mode

- Automatically when the vehicle is turned off (ACC OFF); exits automatically when the vehicle is started (ACC ON). Requires proper wiring via an ACC hardwire kit cable.

3. G-Sensor Mode

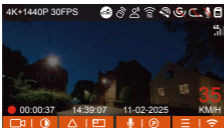
- Enters automatically after 10 minutes of vehicle inactivity; exits automatically when the G-Sensor detects a secondary collision.

4. Manual Mode

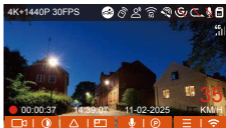
- Press and hold the shortcut button to enter; press any button to exit.

a. Low-light Night Vision in Parking Mode

To improve nighttime security, we utilize the lens's capabilities combined with low-light technology to enhance night vision in parking mode. This feature is enabled by default and activates automatically in parking mode, without affecting normal recording.




Low-light Night Vision Off



Low-light Night Vision On

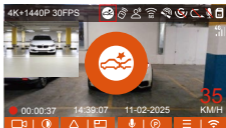
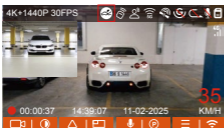
b. Collision Detection

After switching to Parking Collision Detection mode,  icon will appear on the screen, indicating the mode is active.

To adjust collision detection sensitivity: Go to Basic Settings → Parking Mode → Collision Detection

After entering collision detection mode, the dash cam screen will display a collision detection icon in the center. The dash cam will then either automatically shut down or enter standby, depending on the selected parking collision detection setting.

Once powered off or in standby, if the G-sensor detects vehicle vibration or movement, the dash cam will automatically turn on and record for 30 seconds before shutting down or returning to standby. The recorded video will be automatically saved in the parking surveillance folder.

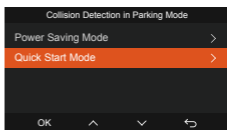
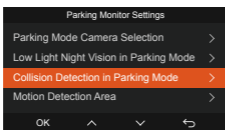


Note: If the dash cam experiences continuous collisions during collision detection recording, it will exit Collision Detection mode and switch to normal recording. It will then wait 10 minutes before re-entering Collision Detection mode.


Two Activation Modes for Collision Detection:


Quick Start Mode: The device enters standby with the screen off. When a collision is detected, it immediately lights up and records. After recording, it saves the file and returns to standby.

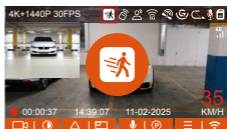
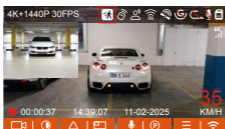
Power Saving Mode: The device shuts down completely. It automatically powers on and records when a collision is detected, then saves the file and shuts down again – ideal for extended energy conservation.




c. Motion Detection

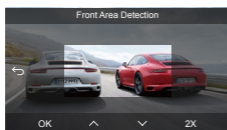
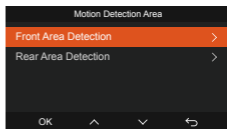
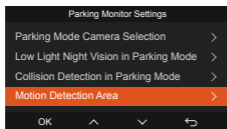
When Motion Detection mode is enabled,  icon will appear on the recording screen.

 icon will also be displayed in the center of the dash cam's screen to indicate the mode is active. You can adjust sensitivity between Low, Medium, and High levels.





Trigger Process & Customizable Detection Zones: To capture events comprehensively, the E2 Pro features Pre-Recording, which automatically includes 15 seconds of footage before motion is detected. Each motion-triggered video totals 45 seconds (15 sec pre-record + 30 sec post-trigger).

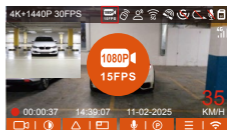
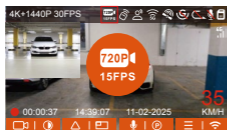
For greater flexibility, the motion detection function now supports Detection Zone Customization. You can define specific detection areas for both the front and rear cameras directly on the E2 Pro. Use the  button to adjust the coverage range according to your needs.



- This function is only available when Parking Mode with Motion Detection is enabled.

d. Low Bitrate recording

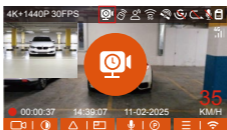
When switched to Low Bitrate mode, the screen will display a  or  icon, indicating either 1080P 15FPS or 720P 15FPS based on your selection.



e. Low Framerate mode

When a low frame rate option (1FPS/5FPS/10FPS/15FPS) is selected, the dash cam will begin recording in the chosen mode after the vehicle is parked and powered off –or remains stationary for 10 minutes.

will appear in the center of the screen to indicate that Parking Mode with Low Frame Rate Recording is active.



Video Length Calculation

The actual duration of a recorded file (in seconds) is calculated as follows:

The final duration of a low framerate video file =
(Actual recording duration × Frame rate of low
framerate recording) ÷ Playback frame rate.
(Time should be converted into seconds)

Example with 1 FPS selected:

A 30-minute video is compressed into a 1-minute file, significantly saving storage space.

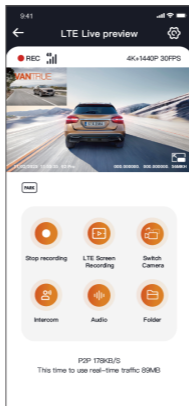
Note:

1. The time unit of the calculation formula is seconds, so the final normal recording time calculated is also in seconds. If you need to convert it into other time units, please check the units and convert by yourself.
2. The low framerate mode is similar to the time-lapse recording function, but the difference is that there is no 5-minute entry mechanism for time-lapse

recording, which will be directly turned on after setting.

4.2.4 LTE Settings (requires LTE module)

To enable remote parking monitoring, VANTRUE offers the LTE Module (LT01, purchased separately). Insert a SIM card into the module, connect it to your dash cam, and access real-time video remotely



In the LTE menu, you can customize:

- Alert Notifications
- Daily Data Usage Limit for SIM uploads
- Automatic Collision Video Upload

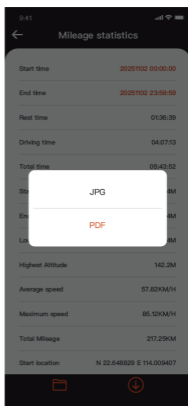
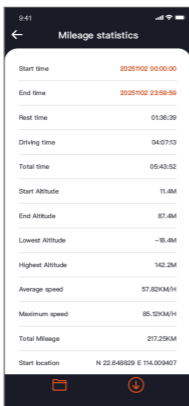
Adjust these settings based on your data plan to optimize usage and maintain reliable remote monitoring.

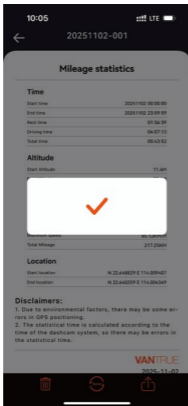
4.2.5 Mileage Statistics

The E2 Pro uses GPS data to track and analyze driving duration, distance, altitude, speed, and other trip information.

To export a mileage report:

- Open the app and go to the real-time preview interface.
- Select a start time and end time.
- Download the report as a PDF or JPG file, saved locally within the app.



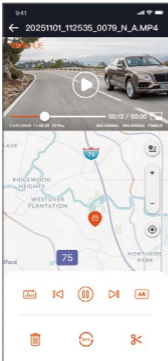


4.2.6 GPS Settings

a. GPS Functionality

GPS is enabled by default and receives signals via the GPS mount. It automatically corrects the date and time based on your location, and records position and speed data in your videos.

This GPS information is embedded directly into recorded footage. To view it, download and install both the **Vantrue App** and the **Vantrue Player**.



Note:

GPS typically connects within 1 minute after startup. If the connection fails, check the following:

- Ensure GPS is enabled in the device settings.
- Confirm the dash cam is securely attached to the GPS mount.
- Evaluate your environment: GPS signals may be weak in underground garages, dense urban areas, tunnels, or near subways.

b. GPS Automatic Time Correction

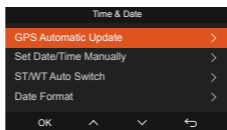
The E2 Pro automatically corrects the time via GPS by default.

To set your time zone manually (e.g., select

GMT-08:00 for Los Angeles), go to device settings.

If you are unsure of your time zone, enable Auto-Time Sync in the Vantrue App while connected to Wi-Fi.

Once synced, the dash cam will update to your phone's time zone automatically.



Note:

GPS auto time correction requires setting the correct time zone. Representative cities are listed for reference with each time zone option.

Automatic Daylight Saving Time (DST) adjustment is only available in the North America.

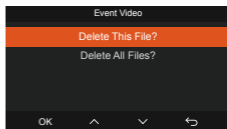
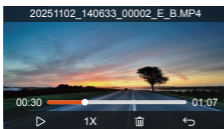
4.2.7 Playing Back & Deleting Files

a. On the Dash Cam:


To play a video, go to File Browser, select a folder, and open the video file.

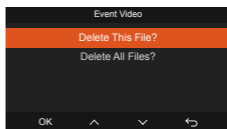
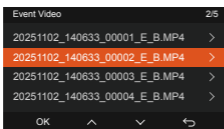
Press the Down Button to jump to the next file.

Press the Center Button during playback to delete the current file.



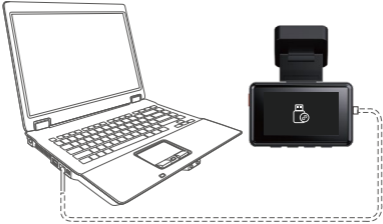
Deleting Videos

In the File Browser interface, press the  Button to open the deletion menu.



b. Playing Back and Deleting Files on a Computer

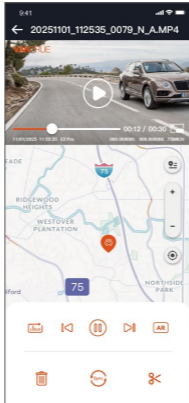
- Connect the dash cam to your computer using the Type-C USB cable. Insert the cable into the PC Interface (located near the rear camera cable port).
- Once connected, aicon will appear on the display, indicating a successful connection. You can now access the video files from the dash cam's storage on your computer.



- Depending on your computer's operating system, the dash cam will be recognized as a removable drive or removable folder.
- To delete files, simply right-click on the file and select Delete.
- Alternatively, you can use a USB card reader to access the files directly from the memory card.
- For a stable power supply during computer connection, ensure the computer USB port supports USB 3.0. When using a desktop computer, connect to the rear USB ports for better power output.

c. Viewing and Managing Files in the Vantrue App

Once the dash cam is connected to your phone via Wi-Fi, you can view, download, or delete recorded files directly from the Camera Folder within the app.



Note:

- Viewing or downloading files from the Micro SD card via the app does not use mobile data.
- To view GPS track information on downloaded videos, disconnect from the dash cam's Wi-Fi. Otherwise, the map may not display properly.

d. To View in Vantrue Player

The Vantrue Player supports video playback, GPS track viewing, speed display, and other features for an enhanced viewing experience.

For detailed instructions, refer to the full electronic manual.

- **Windows users** can download Vantrue Player from the official Vantrue website at <https://www.vantrue.com/pages/vantrue-app-player>

To download, open the official website, click on "Support" -> "Download" -> "Vantrue Player".

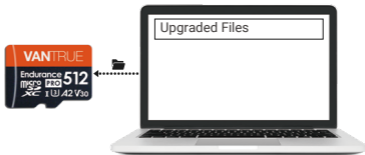
- **Mac users** can search for "Vantrue Player" on the Apple App Store and download it.



4.2.8 Upgrading the Firmware

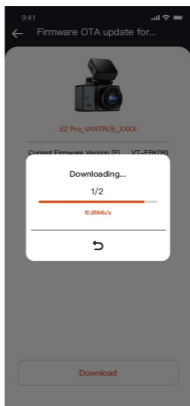
Upgrade method 1: Updates via files

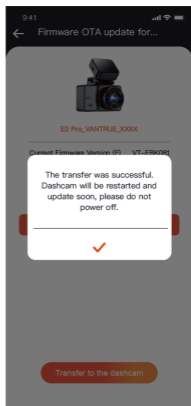
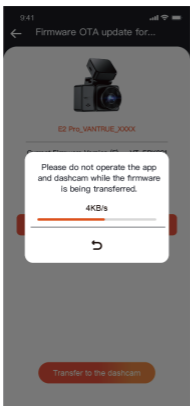
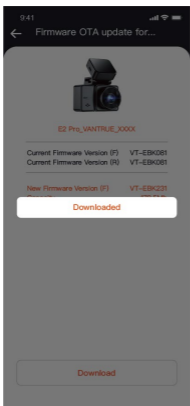
Go to VANTRUE website to download the latest E2 Pro dashcam firmware, copy the firmware file to the root directory of the memory card, then insert the memory card back into the E2 Pro camera, the system will automatically upgrade with the updated firmware of the Micro SD card after the dash cam is turned on.



Upgrade method 2: OTA (Over the Air) Firmware Update

After opening the APP, if you receive an update reminder of the dashcam software, please confirm the upgrade, and then it will jump to the OTA upgrade interface, and then upgrade according to the APP guidelines.





Important Upgrade Notes

To upgrade firmware via file or OTA upgrade, E2 Pro camera needs to keep power on.

To upgrade via OTA, internet data traffic is required to download the upgrade file.

If you upgrade the firmware by file, you need to format the memory card on the E2 Pro dash camera, and then copy the upgrade file to the memory card to upgrade the firmware.

5. Specifications

Model	E2 Pro
Chips	Novatek high-performance processor
Image Sensor	Sony Sensor
G-sensor	Built-in three-axis sensor
WiFi	Built-in 2.4GHz & 5.8GHz
Screen	2.45" IPS
Camera Angle	Front: 155° wide viewing angle; Rear: 160° wide viewing angle
Aperture	Front: F/1.8 wide aperture Rear: F/1.8 wide aperture
Languages	English、简体中文、日本語、Deutsch、Italiano、Español、Français、Русский язык、Polski、한국어、Türkçe、Čeština
Video Resolution	Front + Rear recording mode: 4K+1440P 30FPS 1440P+1440P 30FPS 1440P+1080P 30FPS 1080P+1080P 30FPS 1080P+720P 30FPS 720P+720P 30FPS

Single front recording mode:
4K 30FPS;
2560x1440P 30FPS
1920x1080P 30FPS
1280x720P 30FPS

Video File Format	MP4
Audio	Built-in microphone and speaker
Memory Storage	External: 32GB-1TB, Micro SD Card, U3, Class 10(not included in the package)
USB Port	Type C
Power Source	Built-in super capacitor
Supply voltage current	DC 5V 2.4A
Power	6W
Working Temperature	-4°F to 140°F(-20°C to 60°C)
Storage Temperature	-4°F to 158°F(-20°C to 70°C)

6. Safety Warnings

- This product is an auxiliary device designed to record external images of the vehicle. Depending on the driving and vehicle environment, some functions may not be supported.
- Firmware updates are performed periodically to further improve the product. For specific update information, please follow official VANTRUE announcements.
- While this product can record and save footage of vehicle accidents, it does not guarantee that all accident footage will be captured. Minor collisions may not activate the collision sensor, so such footage might not be saved in the dedicated folder. Users should review all videos from the accident period to avoid missing evidence.
- Always turn off the power before inserting or removing the memory card.
- To ensure stable performance, we recommend formatting the memory card at least once every two weeks.
- Memory cards have a limited lifespan. Prolonged use may result in failure to save data. In such cases, it is advised to purchase a new memory card. Our company is not responsible for data loss caused by using a damaged memory card over time.
- To ensure safe driving, do not install or operate this product while driving.
- Avoid subjecting the product to strong impacts or vibrations, as this may cause damage, malfunction, or render the device unusable.
- Do not clean the product with chemical solvents or detergents.
- The normal operating temperature range for this device is 4°F to 140°F. Use outside this range may cause product failure.

- Do not expose the product to open flames. Avoid using it in high-temperature or high-humidity environments, as this may lead to electric shock, short circuits, or product damage.
- Do not short-circuit, disassemble, or modify the car charger, as this may cause personal injury, electric shock, fire, or product damage.
- Do not disassemble or modify this product, as it may damage the recorder, generate heat, or cause a fire.
- Use this product within the limits permitted by law.

7. Warranty & Support

Warranty

The VANTRUE® E2 Pro Dash Cam comes with a full 12 months warranty. If you register your product on our official site (<https://www.vantrue.com>), you can extend the warranty to 18 months.

Support new

If you have any questions about the product, please feel free to contact us at support@vantrue.net, or leave us a message through the instant chat box: <https://www.vantrue.com>, or open the VANTRUE APP, and find it in the FAQ on the "About" page Answer.

Your opinion matters

VANTRUE® is firmly committed to always improving our products, services, and user experience. If you have any thoughts on how we can do even better, we welcome your constructive feedback and suggestions. Connect with us today at support@vantrue.net.

VANTRUE
truly driven.



CE



IC



FC

✓
RoHS



www.vantrue.com

Made in China