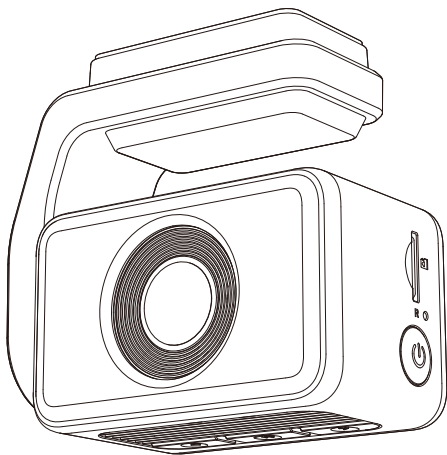




V1.3

REDTIGER
CAM GOOD



F4 User Manual

redtigercam.com

The information in this manual is subject to change without notice.

Content

Notice	2
Product Specifications	3
Package Contents	4
Appearance	5
Touch Screen Function	6
Buttons and Functions	9
Voice Control Function	11
Inversion Function	12
User Interface Overview	13
Function Overview	16
APP and Wi-Fi Function	19
How to Play Video on Computer	21
Installation	23
Troubleshooting	26
Customer Service Center	28

Notice

- Please read this manual carefully before operation and keep it for future reference. It will be helpful should you encounter any operational problems.
- Non-original parts or Improper installation will void the manufacturer's warranty. The installation instructions do not apply to all types of vehicles and are written as guidelines to assist in installing the system.
- Consult with an experienced technician if you are not comfortable installing the device on your own.
- Please make sure to read and understand local laws and regulations regarding cameras and their use in a vehicle. Laws may vary by state.
- Do not obscure the view of the road ahead or obstruct the deployment of any airbags in the event of an accident.
- When not in use, please disconnect the car adapter from both the 12/24V DC outlet in your vehicle and the device itself.
- Only clean the device with a soft dry cloth, for tough dirt, apply some neutral detergent diluted in 5 to 6 parts water on a soft cloth.
- Note that alcohol, thinner, benzene, etc. could cause damage to the paint or coatings on the device.
- Avoid making contact with the lens as this may cause damage.
- The video recordings made by this device are intended for personal use only.
- While driving, do not adjust the controls of your device, as it may draw your attention from your surroundings.

Product Specifications

Item Name	F4 Dash Cam	Video Format	MP4
Screen Size	2.2" IPS Touch Screen	Photo Format	JPG
Recording Resolution	Front 4K/25fps Front 2.5K/60fps Front 1080P/120fps		
Input	DC 12V/24V	Output	DC 5V-2.5A
Operating Temperature	-4°F~158°F	Lens	F2.0
Memory Card	512GB	Warranty Period	18 Months

Note:

If you have any problems during use, we will provide free device replacement within 18 months of purchase, in addition to lifetime technical support.

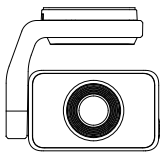
*The specific warranty period is subject to local laws.

Extended Warranty Service:

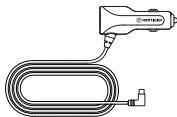
You may also receive an additional 6 months of extended warranty service by registering your device on our website.

URL: <https://www.redtigercam.com/pages/warranty-form>

Package Contents



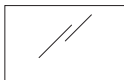
- F4 4K Dash cam



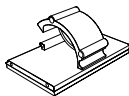
- Power Supply Cable with Car Charger



- Adhesive Slipcover



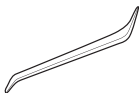
- Electrostatic Sticker *2



- Cable Clips*5

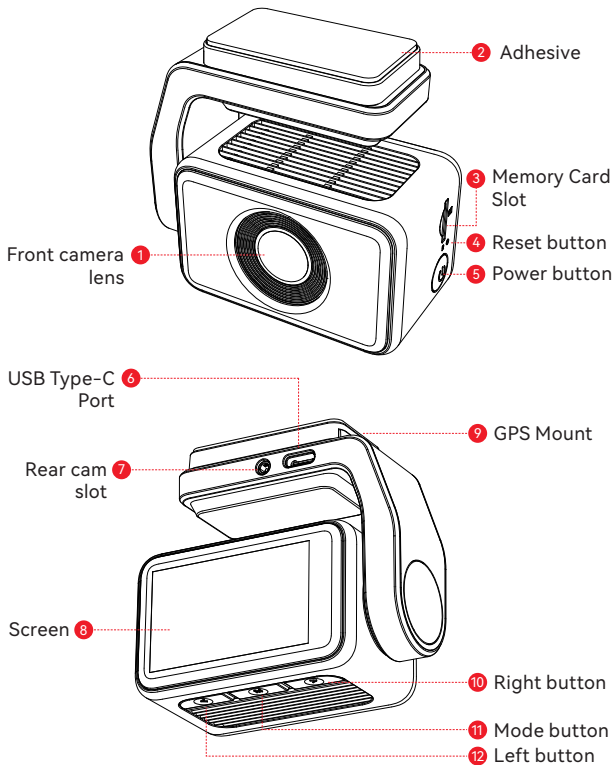


- User Manual

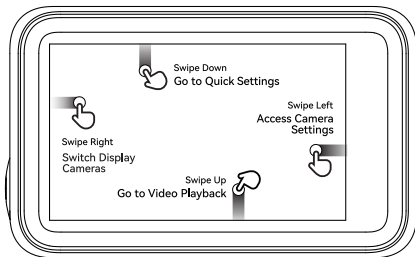


- Tool

Appearance



Touch Screen Function

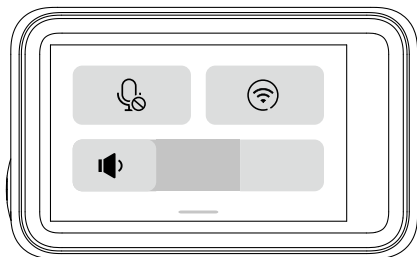


- **Screensaver Mode**



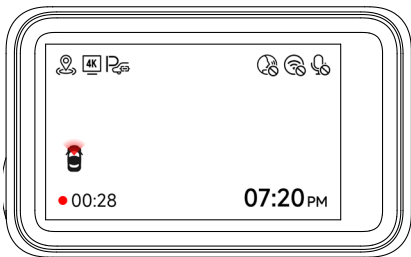
Swipe the screen right to switch the screen to Front camera > Screensaver.


- **Quick Setting Mode**




Swipe down to enter the quick setting mode you can conveniently adjust the volume, turn on or off the recording and wifi.


- **Video Mode**



You can double-tap the screen to lock the currently recorded video and a small white lock appears in the middle of the screen  .

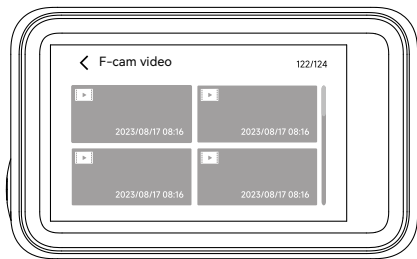
You can manually click the icon  at the top of the screen to choose whether to record audio during video recording.

You can manually click the icon  at the top of the screen to choose whether to turn on Wi-Fi.

You can manually click the icon  at the top of the screen to choose whether to turn on the key sound.

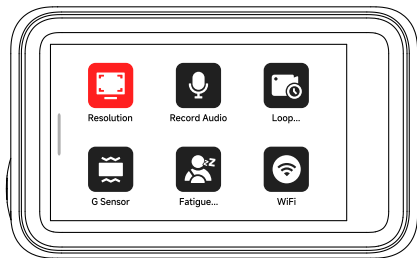
You can manually click the icon  at the top of the screen to choose whether to turn on the Voice control.

• **Playback Mode**



Swipe up the recording page to enter playback mode.
Swipe up on the playback interface to turn pages.
You can click on any video to play it back.

• Setting Mode



Swipe right on the recording page to enter setting mode. Swipe up and down on the menu interface to turn pages. Click on any function icon to touch the screen.

Buttons and Functions



Power Button

Recording Mode:

- Short press-to Switch screen
- Long press-to Turn off the Camera

Setup Mode:

- Short press-to Return to the previous screen

Playback Mode:

- Short press-to Return to the previous screen

M

Menu Button

Recording Mode:

- Short press to Enter main menu

Setup Mode:

- Short press-to Enter/Confirm specific settings

Playback Mode:

- Short press-to Select and play the specific file
- Long press-to Delete/Lock/Unlock the specific file (After selecting the video)

<

Left Button

Recording Mode:

- Short press-to Lock the recording file
- Long press-to Turn on or off Wi-Fi

Setup Mode:

- Short press-to Select the previous function

Playback Mode:

- Short press-to Select the previous file

>

Down Button

Recording Mode:

- Short press-to Take a snapshot
- Long press-to Stop recording

Setup Mode:


- Short press-to Select the next function


Playback Mode:

- Short press-to Select the next file

Voice Control Function

Fast control through simple voice commands

If the voice control icon is gray , it means the function is being connected.

If the icon is white , it means the function can be used normally.

You have two ways to enable this feature.

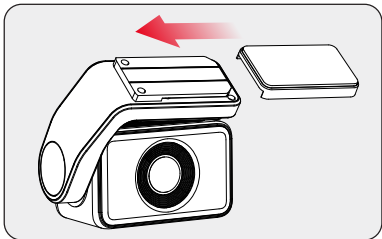
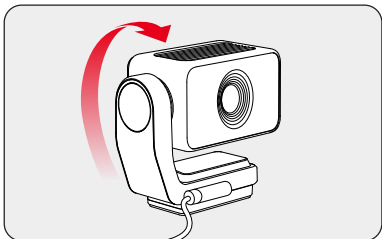
- 1 Tap on the icon to turn the feature on or off.
- 2 Enter the setting mode-voice control-on/off.

lock the video	
take picture	
open screen	turn off display
turn on wifi	turn off wifi
open recording	turn off recording
show front camera	show rear camera

Note:

you can see the specific commands in setting-voice control.

Inversion Function



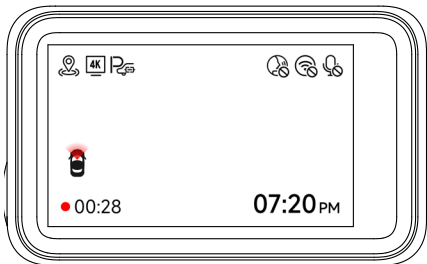
⚠ WARNING







1. GPS signal may fluctuate when using the machine upside down.
2. When rotated 180° upside down, the buttons may be difficult to operate, please try to use the touch screen function.


It offer the ability to rotate 240° for flexible mounting options to ensure stability and prevent interference with the driver's view while allowing for easy removal at any time.

User Interface Overview

• Recording Mode

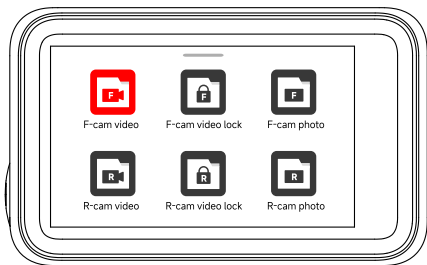


Icon	Description
	Recording resolution
	Whether to connect the hardwired kit and set up parking monitoring
	Voice control
	GPS status
	Wi-Fi status
	Voice recording status

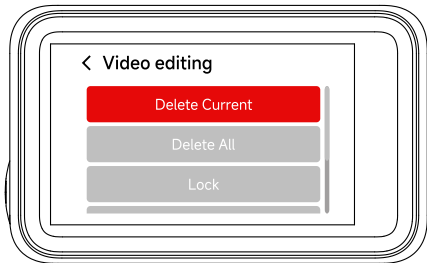
Icon	Description
	Whether the rear camera is connected
● 03:22	Recording status and recording time
● 03:22	Emergency recording is on
07:20 _{PM}	Date and time of the camera

• Playback Mode

- 1 Swipe up the recording page to enter playback mode.
- 2 Press the Left or Right button to select the folder you want to play, then press the M button to enter.



- 3 Press the M button to watch the recorded video.
- 4 Long press the M button for 3 seconds to edit your recorded videos.

























Note:









All of the above functions can be done via the touch screen.

Function Overview

Short press the M button to enter the settings menu, where you can adjust various functions and parameters of the camera.

Icon	Function	Option/Description
	Resolution	2160P @25fps/1440P @60fps/1080P @120fps
	Record Audio	Sound Recording
	Loop recording	1/3/5mins
	G-sensor	Off/Low/Medium/High
	Fatigue Driving	A Reminder Will be Made During 1h/2h/3h/4h/OFF
	Wi-Fi	ON/OFF
	Click Tone	ON/OFF
	Screen Saver	OFF/10s/30s/2mins, Screen goes off after the set time
	Voice control	ON/OFF/Voice Command
	Mirror Flip	Vertical Flip Your Rear View *Need to connect rear camera

Icon	Function	Option/Description
	Rear Cam Flip	Vertical Flip Your Rear View *Need to connect rear camera
	Parking Mode	Please connect the ACC hardwire kit
	GPS Info	Display GPS signal strength
	Date Stamp	ON/OFF
	Speed Stamp	ON/OFF
	GPS Stamp	ON/OFF
	Speed Units	KM/H / MPH
	Language	Choose Your Preferred Language
	Clock Setting	Update With GPS
	Time style	12h/24h
	Time Zone	Choose Your Time Zone
	DST	Daylight Saving Time ON/OFF

Icon	Function	Option/Description
	Frequency	60Hz/50Hz
	Format Reminder	Reminder to Clear Data
	Format	Format SD card. All data will be deleted
	Card Speed	Card Speed Detection
	Default Setting	Reset All Settings
	APP	A QR Code for Redtiger app
	Products	Software Version
	Help Center	Scan the QR code to contact us

Note:

- In order to ensure a smooth user experience, it is suggested that you format your memory card once a month.
- When you change the Click Tone setting to OFF, the startup and shutdown sounds will also be turned off.

APP and Wi-Fi Function

• How to connect Wi-Fi?

1. Download the APP


You can download the APP from:

- Official website: <https://www.redtigercam.com/pages/app>
- QR Code from your dash cam or on the right side.
- Apple APP Store or Google Play Store search "Redtiger".

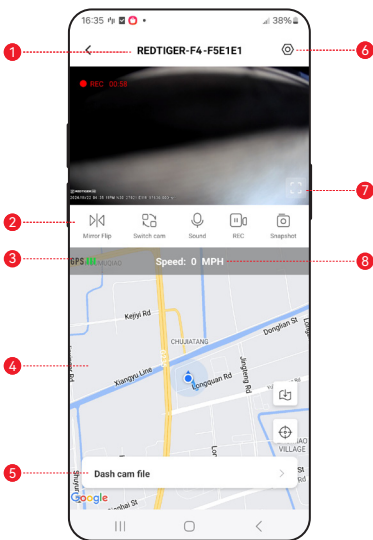


2. Turn on the Wi-Fi on the dash cam, the Wi-Fi and SSID and password will appear on the screen.
3. Open Redtiger APP> jump to the Wi-Fi connection interface according to the steps> find the Wi-Fi of the dash cam> enter the password to connect.
(The default password is 12345678)
4. After successfully connecting to Wi-Fi, return to the APP to use it.

• View/Download/Delete/Share Video

1. Click the  on the main interface to view video and picture files.
2. Long press the video file and select it, then choose to download or delete.
3. Return to the APP home page and select the Album> Open and watch/share it.

• App home



1 Native Wi-Fi Name

3 GPS Singal

5 Playback Footage

7 Rotate Video Screen

2 Function Icon

4 Map

6 Dash Cam Settings

8 Speed Info

• Over-The-Air Updates

Note: Please update the Redtiger App to the latest version to use this function.

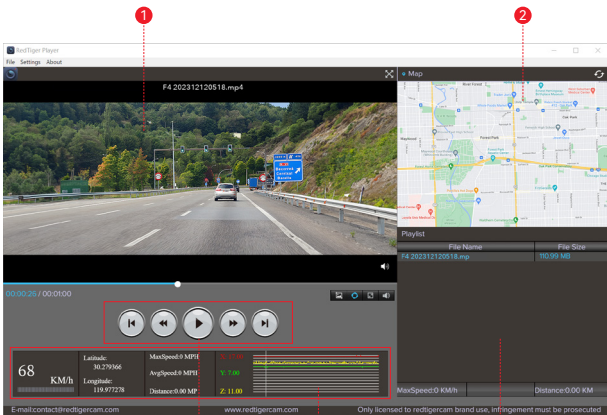
1. To perform an over-the-air update, disconnect your phone from the dash cam's Wi-Fi network. Connect your phone to LAN (not the dash cam's Wi-Fi) for 5 seconds, then disconnect. Reconnect to the dash cam's Wi-Fi network.
2. Once Wi-Fi connection is successful, open the Redtiger App to start using it. If new software is detected, the App page will indicate the availability of an update.
3. To perform the update, click on "Upgrade Now". The Redtiger app will prompt you to download the update package.
4. Connect the dash cam to send the update package. Do not power off the dash cam during the upgrade process. Once the upgrade is completed, the app will display the upgrade success message, and the dash cam will automatically restart.

How to Play Video on Computer

We recommend using REDTIGER Player as the correct video player to watch/play videos. It can also view Google Maps.

You can Download it for free on Mac or Windows from the following link: <https://www.redtigercam.com/pages/gps-player>

You can choose different playback modes in Settings > Video Playback Mode. You can set playback speed, language, map, and various other functions.



- 1** Video play window (Front)
- 2** Map and track display
- 3** Play control panel
- 4** Speed and driving state indication
- 5** Play list

Note:

When you find the desired video file, hold down the left mouse button and drag and drop it onto the video player to play it.

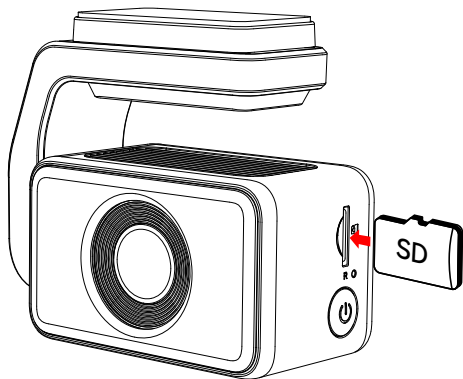
Installation

⚠ WARNING

Please make sure to connect all cameras and wires before power on the cam screen, otherwise, the camera cannot work properly. Please follow the instructions below for the first-time installation of the Redtiger dash cam.

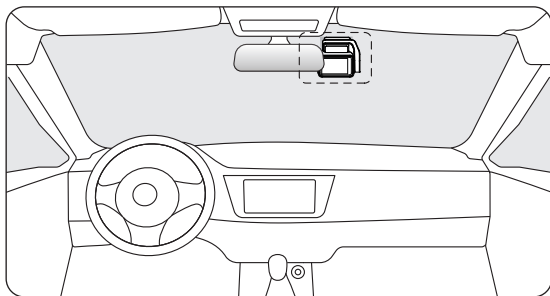
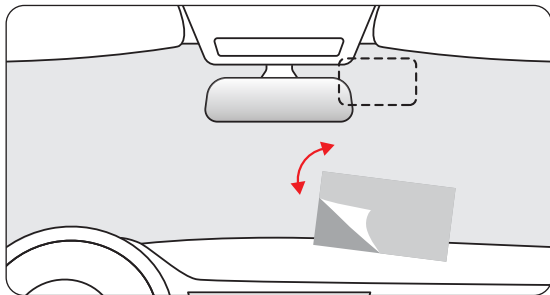
• **Insert Memory Card**

Insert the Memory Card into the dash cam, taking care that the gold contacts are facing towards the screen of the dash cam. Push the memory card until it clicks into the slot.



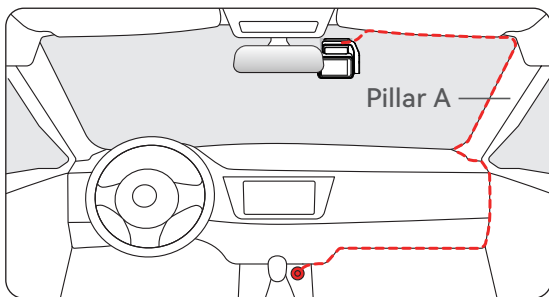
- **Front camera installation**

Peel off the electrostatic sticker on the cellophane and transfer it to where you want to stick it. Attach the front camera to the electrostatic sticker and press to make it firmer.




• Wire Layout In The Vehicle



- 1 The car charger is connected to the cigar socket.
- 2 Connect the other end of the car charger to the dash cam.
- 3 Use the crowbar to run the power cable along the front windshield and the roof, and hide the cable down the A-pillar, so as not to block the driver's sight and cause danger.



Trouble Shooting

• Why is there no GPS signal?

1. Clean and reconnect the probe on the main unit and bracket. Check for any interference in your car, like metal film on the windshield, radio antenna, or radar detector.
2. Move your car to an open area.
3. If the GPS icon is  , it means the GPS signal is good.

If the GPS icon is  , it means that the GPS signal is being received. If the GPS icon is  , it means there is no GPS signal.

• How to turn off the on/off music of dash cam?

1. Click the system sound icon on the screen to turn off the camera sound.
2. Please go to Settings > Click Tone > Off.
When the click tone is turned off, the power on and off music will also be turned off.

• Why does my dash cam prompt card error or please format Memory Card every once in a while?

Please follow the steps below to check:

1. Please go to Settings > Format Reminder to check whether the regular format reminder is enabled.
2. Format the Memory Card.
3. Restore factory settings and restart the dash cam.
4. Update the firmware.

• Dash cam repeated restart/no boot?

1. Make sure you are using the original car charger.
2. Unplug the Memory Card and car charger in turn, and reinstall them. Check whether the short circuit is caused by accessories.

3. Reset the machine through the small hole at the bottom of the driving recorder.
4. If none of the above can solve the problem, please try to power on the USB cable to confirm whether the host can be used normally.
5. Please go to the official website to update the firmware.
6. If it is not resolved, please contact your dedicated customer service for a replacement.

• **Why "Mass storage" appears on the screen?**

"Mass storage" happens when you use a USB cable with data transfer mode causing the dash cam to enter transfer mode. In this mode, data can only be transferred; no other functions work. For best results, use the original car charger or a USB cable without data transfer mode.

• **Why can't I connect to Wi-Fi?**

1. Check the working distance of Wi-Fi, about 15ft.
2. Check the SSID and password of the Wi-Fi, or whether there are other devices connected to the Wi-Fi..
3. Turn off mobile data, security software, and VPN on your phone.
4. If the issue persists, please contact customer support for assistance.

• **Why is the time setting incorrect?**

The dash cam features built-in GPS. It automatically adjusts time based on your location and time zone, eliminating the need for manual time changes. And you can adjust the time through Settings > Time Zone/DST.

• **Why is the screen flickering when updating firmware?**

This is a normal phenomenon, it is expected to wait for about 20s, the firmware will be updated to normal use, you can check whether to update to the latest version in the settings > product.

Customer Service Center

If you have any problems using or installing the dash cam, please contact us with any questions.



Help Center



WhatsApp



For more information:

After sales: help@redtigercam.com

Business Cooperation: contact@redtigercam.com

Customer Phone Service: +1 888 966 8028 (US)



REDTIGER

CAM GOOD

Check us out here.
Product and service are the foundation of Redtiger.

Instagram: @redtiger_dashcam
Facebook: Redtiger Dash Cam



www.redtigercam.com