

NEXTBASE



222XR

USER MANUAL

Introduction

This range of Nextbase™ Dash Cams has been designed specifically with ease of use in mind; it is recommended NOT to change the default settings, which have been carefully selected to give the best performance for day to day use.

Please check the firmware version of the Dash Cam, the version can be found in the Setup menu under System Info.

The latest versions are available to download from our website, where you can download and update when necessary.

www.nextbase.com

Before you can use your Dash Cam, it is essential to make sure it is fully charged. Connect your Dash Cam via the USB port to a home power source such as a PC or home USB socket for approximately 2 hours.

Basic Operation

A U3 type Micro SD card is required to use this Dash Cam. This is due to the very large data rate generated by high resolution recording. For best results, we recommend using our Nextbase branded SD cards with your Dash Cam. For use with Rear Cam attached, a U3 Card is required. Your Nextbase Dash Cam is set to record video, in files of just 1 minute in length. This means that each video file is a manageable size should you need to download and send to your insurance company. Eventually your MicroSD card will fill up with video files but don't worry, the camera automatically deletes the oldest file to make space for new recordings. This way you never run out of space and have plenty of driving data saved. Typically a 16Gb card will store the last 45 minutes of driving footage. The GPS will automatically adjust for Daylight Savings Time.

Automatic Start / Stop Technology

The Dash Cam will automatically power on and be ready to use once power is available. In some vehicles this will be when connections are made, for others the Dash Cam will power on once the ignition has been turned on. When power is cut off, the Dash Cam will perform an automatic shutdown process.

1. Tips for capturing best video footage:

- 1.1 Position the Dash Cam in the centre of the windscreen and ideally behind the rear view mirror so it is not a distraction to the driver.
- 1.2 Ensure that the area on the windscreen that the Dash Cam is looking through is clear of dirt and is within the wiper zone. This will ensure that your videos are as clear as possible.
- 1.3 Reduce the amount of sky in the picture, by angling the view of the camera towards the road. Too much sky will make the road appear darker due to the automatic exposure compensation.
- 1.4 Remove unnecessary items from your dashboard. If objects are placed on your dashboard these can cause reflections to be seen on the windscreen and these reflections may be captured during recording.

2. Tips for stable memory card performance:

- 2.1 Periodically format the memory card. Every 2-3 weeks we recommend that you format the memory card. This will wipe any files from the card and set it up afresh for continued use with your Dash Cam. Of course, you should only do this AFTER you've downloaded any files from the card that you may want to keep, as formatting the card will remove all content.
- 2.2 Format your memory card using the Dash Cam. This will make sure that the card is structured specifically for your camera. Within the Setup menu, select 'Format SD Card' and follow the on-screen instructions.
- 2.3 Switch off the Dash Cam before removing the SD card, to prevent the chance of damage being caused to the memory card or the files stored upon it.

Nextbase SD Cards

For best results, we strongly recommend using our Nextbase branded SD cards with your Dash Cam, available to purchase online from nextbase.com, or your nearest retailer. A card that is not made specifically for a Dash Cam may appear to work perfectly in the beginning, although failure tends to happen after prolonged use, this could be days, weeks, or months. In a worst-case scenario, you may only discover recording failure after your SD card fails to record a serious incident, therefore using a suitable SD card is imperative. See SD card information page for more info.

Contents

Introduction **02**

Precautions **04**

Warnings / How a Dash Cam Works **05**

Usage Precautions / Notices **06**

Technical Specifications **07**

Package Contents **08**

Product Features **09**

Camera Parts and Controls **10**

In Vehicle Installation **11 - 16**

Position your Dash Cam **17**

First Time Use **18**

Settings **19 - 20**

On Screen Icons **21**

Delete and Protect Files **22**

MyNextbase Player **23 - 24**

MyNextbase Cloud **25**

PC Connection / Firmware Updates **26**

Nextbase SD Cards **27**

FAQs **28 - 29**

Legal & Compliance **30 - 33**

Precautions

Please read this manual carefully before operation and keep it for future reference. It will be helpful should you encounter any operational problems.

Warning: Do not expose this product to rain, moisture or water under any circumstances, doing so may result in the risk of electric shock or fire.

Caution: To reduce the risk of electric shock, do not perform any servicing other than that contained in the instruction manual unless you are qualified to do so.
Have the unit serviced by a qualified service technician if; The unit has been exposed to rain or water.
The unit does not seem to operate normally.
The unit exhibits a marked change in performance.

LCD: A Liquid Crystal Display (LCD) screen is a multilayer complex component, containing 1,229,760 pixels. Pixels can however fail during normal product life. 1 pixel = 0.0000008% failure rate, and one pixel failure per year of operation is considered normal and not a cause for concern.

WEEE: Disposal of Waste Electrical and Electronic Equipment and/or Batteries by users in private households in the European Union. This symbol on the product or on the packaging indicates that this cannot be disposed of as household waste. You must dispose of your waste equipment and/or battery by handing it over to the applicable take-back scheme for the recycling of electronic equipment and/or batteries. For more information please contact your local household waste disposal office.

Choking Warning: Some Products may contain components that are small enough to be swallowed. Please keep out of reach of children.

Distractions can lead to accidents, and the risk of injury or death.
Always keep your eyes on the road, and keep aware of your surroundings.

Cautions on Using this Product

1. Ensure that the windscreen is free of dirt or grease before placing mount upon it.
2. Do not obscure the view of the road ahead or impede the deployment of any airbags in the event of an accident.
3. When not in use, please disconnect the car adaptor from both the 12/24Vdc outlet in your vehicle and the Dash Cam itself.
4. Only clean the Dash Cam with a soft dry cloth, for tough dirt, apply some neutral detergent diluted in 5 to 6 parts water to a soft cloth. Please note that alcohol, thinner, benzene etc could cause damage to the paint or coatings.
5. Avoid making contact with the lenses as damage may be caused.
6. If required clean the glass lens carefully using spectacle lens cleaning fluid on a soft cloth only.
7. Before you can use your Dash Cam, it is essential that it is fully charged. Connect your Dash Cam via the USB port to a home power source such as a PC or home USB socket for approximately 2 hours.
8. You agree to use your Nextbase Dash Camera in compliance with all applicable laws, including local laws of the country or region in which you reside or in which you use your Nextbase Dash Camera. When you use your Nextbase Dash Camera, you do so at your own initiative and you are responsible for compliance with any applicable laws, including but not limited to applicable privacy and data collection laws, and laws prohibiting or restricting the placement of objects on the windshield of a motor vehicle.
- IT IS THE USER'S RESPONSIBILITY TO MOUNT THE DEVICE IN COMPLIANCE WITH ALL APPLICABLE LAWS AND ORDINANCES. Portable Multimedia Limited trading as Nextbase is not responsible if you access or use your Nextbase Dash Camera in any manner that violates applicable law
9. The video recordings made by this Dash Cam are intended for personal use only.
10. Publication of the recordings on Youtube, the internet or other methods are subject to the Data Protection Act and the requirements thereof must be adhered to. If the Dash Cam is to be used within a commercial environment, i.e. truck use, then the CCTV regulation apply also, in addition to the Protection Act regulations. This includes labelling to identify the use of CCTV is taking place, the omission of Audio recording and informing the relevant authorities of who controls the data.
11. Video playback upon the Dash Cam which is visible to the driver is prohibited or restricted in some countries or States. Please adhere to these laws.
12. Whilst driving, do not adjust the controls of your Dash Cam as this is a distraction to driving.

Product Warnings

Failure to heed the following warnings could result in an accident or collision resulting in death or serious injury.

Distraction Warning

This device is intended to enhance the situational awareness when used properly. If used improperly, you could become distracted by the display, which could lead to an accident causing serious personal injury or death. DO NOT seek to access the information stored on the device or change the device settings whilst driving. Information stored on the device should be reviewed only when your vehicle is stationary, and you are parked in a safe place in compliance with local laws. The device settings should only be changed when your vehicle is stationary, and you are parked in a safe place in compliance with local laws. Always maintain awareness of your surroundings and do not stare at the display or become distracted by the display. Focusing on the display could cause you to miss obstacles or hazards. Use the device at your own risk. Video playback upon devices with display which are visible to the driver, is prohibited or restricted in some Countries or States. Please adhere to these laws.

Vehicle Installation Warnings

When installing the device in a vehicle, do not place the device where it obstructs the driver's view of the road or interferes with vehicle operating controls, such as the steering wheel, foot pedals, or transmission levers. Do not place unsecured on the vehicle dashboard. Do not place the device in front of or above any airbag. Nextbase is not responsible for any costs or expenses associated with void warranties or vehicle repairs.

Battery Warnings

Lithium-ion batteries are used in most Nextbase™ devices. If these guidelines are not followed, batteries may experience a shortened life span or may present a risk of damage to the device, fire, chemical burn, electrolyte leak, and/or injury.

- Do not disassemble, modify, remanufacture, puncture, or damage the device or batteries.
- Do not remove or attempt to remove the non-user replaceable battery.
- Do not expose the device to fire, explosion, or other hazard.
- Do not expose the device to rain or water.

How a Dash Cam works

Camera

Your Piqo has a front facing camera to keep an eye on the road ahead.

Power Source

When connected to your vehicle using the 12V car adaptor, Pro Install Cable* or Piqo Quick Connect Cable*, your Piqo automatically turns on and starts recording when the engine starts.

Recording

The camera continuously records video footage while you're driving. Video is recorded in short segments, one minute long, to make it easier to manage the files.

Storage

Recorded video footage is stored on an SD card inserted into your Piqo. The SD card acts as storage, similar to an SD card in a digital camera.

Nextbase App

The all-new Nextbase App ensures a seamless connection to access, edit and share footage easily. Cutting edge features such as Emergency SOS are included to give you the best Dash Cam experience. Search for 'Nextbase App' in the app store.

Loop Recording

As the memory card fills up with recorded video, your Piqo uses a feature called "loop recording" to overwrite the oldest footage with new recordings. This ensures that the camera can keep recording even when the memory card is full. Important files should be downloaded from the Dash Cam using the Nextbase App.

Event Recording

Your Piqo has a built in G-Sensor+ which detects sudden movement or impacts to your vehicle. When an event like a collision or sudden braking is detected, your Piqo will automatically protect the footage surrounding the event and mark it as a protected file to be reviewed.

Playback and Accessing Footage

To view the recorded footage, use the Nextbase App or use a USB-C data cable* to connect your Piqo to your computer. Or you can read the SD card with a card reader on your computer. Once the footage is accessed, you can review, edit, or share the recordings as needed.

*sold separately

Useage Precautions

Failure to heed the following precautions could result in personal injury or property damage, or negatively impact the device functionality.

Battery Precaution

- Do not immerse or expose the Dash Cam or batteries to rain, water or other liquids.
- Do not leave the device exposed to a heat source or in a high-temperature location, such as in the sun or in an unattended vehicle. To prevent the possibility of damage, remove the Dash Cam from the vehicle or store it out of direct sunlight, such as in the glove box.
- Do not operate the Dash Cam outside of the following temperature range:
from -20° to 45°C (from -4° to 113°F).
- When storing the Dash Cam for an extended time period, store within the following temperature range: from 0° to 25°C (from 32° to 77°F).
- Do not use a power and/or data cable that is not approved or supplied by Nextbase™.
- Contact your local waste disposal department to dispose of the Dash Cam/batteries in accordance with applicable local laws and regulations.

Windshield Mounting Legal Restriction Precaution

Before using the Dash Cam on your windshield, check the state and local laws and ordinances where you drive. Some laws prohibit or restrict the placement of objects on the windshield of a motor vehicle. IT IS THE USER'S RESPONSIBILITY TO MOUNT THE DEVICE IN COMPLIANCE WITH ALL APPLICABLE LAWS AND ORDINANCES. Always mount your Nextbase Dash Cam in a location that does not obstruct the driver's view of the road. Nextbase does not assume any responsibility for any fines, penalties, or damages that may be incurred as a result of any state or local law or ordinance relating to the use of your Nextbase Dash Cam.

Camera Legal Requirements Precaution

In some jurisdictions it could be considered an invasion of privacy rights to take or publicly display photographs or videos of people or their vehicles using this product. It is your responsibility to know and comply with applicable laws and rights to privacy in your jurisdiction and in any jurisdiction in which you may use this device. Video recordings made by this Dash Cam should be for personal use only. Publication of the recordings on YouTube, the internet or other methods is subject to the data protection legislation and the requirements thereof must be adhered to. Such data protection legislation may prohibit the use and dissemination by you of Dash Cam footage or may impose restrictions on it – we recommend that you check the legal requirements with your legal advisor before disseminating any Dash Cam footage.

If the Dash Cam is to be used within a UK commercial environment, i.e. truck use, then the CCTV regulations apply in addition to the Data Protection Act regulations. This includes labelling to identify the use of CCTV is taking place, the omission of Audio recording and informing the relevant authorities of who controls the data. For use in a commercial environment in non-UK countries, please refer and adhere to local regulations and requirements. For non-UK operation, specific legal requirements may apply where Dash Cams are to be used in a commercial or employment context – again, we recommend that you check the legal requirements with your legal advisors prior to commencing use of Dash Cams in commercial or employment contexts.

Notices

G Sensor Notice

The G Sensor within the Dash Cam measures forces exerted upon it, with reference to one g which is the nominal force exerted upon us when stationary on the earth's surface. The G Sensor will also trigger to protect any recording currently in progress, if a pre-determined threshold of force is exceeded. The G Sensor protection will be adversely affected if the Dash Cam is NOT mounted in the vertical direction i.e. with the lens pointing to or from the direction of travel. G Force information derived from a G Sensor is not warranted to be totally accurate at all times, as it is derived from the G Sensor through a sampling method over time. The precision of the G Sensor value recorded depends upon when the acceleration took place at the instance of the sample taken. The thresholds to trigger the video protection rely upon a trigger value being exceeded between two successive samples, in any one of the three G Sensor axis. If the Automatic G Sensor protection does NOT trigger during an event, then the Protect button should be pressed, in order to protect the file. Protecting the file can also be performed using the Playback function upon the Dash Cam (models with LCD screens), or through the MyNextbase Connect™ App for applicable Wi-Fi models.

Parking Mode Notice

We only recommend enabling Parking Mode when the Dash Cam is installed using a permanently live power supply (live when the ignition is off) provided by a Nextbase Hardwire Kit, the use of this feature without continuous power being fed to the Dash Cam will not be sufficient for a consistent and reliable Parking Mode experience.

Innovation, Science, and Economic Development Canada Compliance

This device complies with Innovation, Science and Economic Development Canada license-exempt RSS standard(s).

Operation is subject to the following two conditions:

- (1) this device may not cause interference, and
- (2) this device must accept any interference, including interference that may cause undesired operation of the device.

Protected Files

Protected Files may be overwritten, or deleted; make sure to back up important files to a separate, secure place as soon as possible to avoid accidental deletion from the Dash Cam's SD Card. We recommend storing important files on a separate SD or hard drive. If a video file has been protected, this does not mean that the file will remain protected forever. Many of our latest Dash Cam models will overwrite the oldest protected files, if the protected files on the SD card begin taking up too much storage space. The table shown below lists the file limit for each Dash Cam model.

Model	Protected File Limit
122	N / A
122HD	40%
222	30%
222G	30%
222X	30%
322GW	33%
422GW	33%
522GW	33%
622GW	33%

In conclusion, if an incident occurs and a photo or video is important to you, BACK IT UP to a separate storage place as soon as possible. Format (delete all files) your SD regularly, after backing up important files, in order to keep it in good working condition.

Technical Specifications

Model Number / Name	NBDVR222XR	
Power Requirements	5V / 1.5A	
Power Supply	12-24Vdc Car Power Cable (supplied) Fuse Type: 32mm / 2A Output: 5Vdc Hardwire Kit also available to purchase for a hidden, permanent power supply.	
Sensor Resolution	2.12MP (1920 x 1080)	
Lens - Type / Angle / Aperture	Front Camera	Rear Camera
	5G / 140° / F1.6	2G / 140° / F1.8
Recording Resolution	Front Camera	Rear Camera
	1080p @30fps	720p @30fps
	720P @30fps	720P @30fps
Screen Size	2.5"	
Screen Resolution	732 (W) X 240 (H) pixels x RGB (720)	
Screen Ratio	16:9	
Card Reader	MicroSD, Class 10, up to 128GB	
SD Card (Recommended Type)	MicroSD, Class 10 for Dash Cam only; U3 if Rear Cam connected up to 128GB.	
SD Card Recorded File Capacity (based on default settings. Recording times are reduced with Rear Cam attached)	8GB MicroSD = 45 minutes of recording 16GB MicroSD = 90 minutes of recording 32GB MicroSD = 180 minutes of recording 64GB MicroSD = 360 minutes of recording 128GB MicroSD = 720 minutes of recording	
Recording Format	MP4	
Internal Battery	Lithium-Polymer 3.7V / 280mAh (approx. 15 mins recording time) Battery design allows the 'Auto Power Off' feature to function in event of power loss within the vehicle. It is not intended as an alternative power source to replace the supplied car power cable.	
Unit Dimensions (mm)	Front Camera	Rear Camera
	82 x 46 x 46	44 x 40 x 33
Unit Weight	Front Camera	Rear Camera
	79g	22g



Mac is a registered trademarks of Apple Inc. in the United States and other countries.
Windows is a registered trademark of Microsoft Corporation in the United States and other countries.
MicroSD™ and the microSD logo are trademarks of SD-3C, LLC.
Nextbase™, MyNextbase Player™, MyNextbase Cloud and Click&Go PRO™ are registered trademarks of Portable Multimedia Ltd.
Other trademarks and trade names are those of their respective owners.

Package Contents

USB Connection Cable

Connect your Dash Cam to a PC



Click & Go Powered Mount

Mount your Dash Cam



Cable Tidy Tool

Use the Cable Tidy Tool to stow the power cable within the lining of your car



Nextbase 222XR Dash Cam

Your Dash Cam to record the road ahead



Car Power Cable (4m)

Charge your Dash Cam in car using the Car Power Cable



3M Mount Pad

Adhesive 3M attachment



Rear Window Camera

Record the road behind to capture events as all around you and your vehicle.



Quick Start Guide

Quickly get your Dash Cam up and running using the Quick Start Guide

Product Features



HD Recording Capability

1080p recording at 30 FPS, to record the road ahead



Rear Camera Compatibility

The Nextbase™ 222XR is designed for use with a Rear Window Camera, allowing you to record both the road ahead, and the road behind, making sure you're protected against tailgaters and rear-end impacts..



HD Touch Panel Display

Bright, clear, high definition 2.5" screen with IPS technology for a wide viewing angle.



Click & Go Pro Powered Mount

Our exclusive Click and Go Pro powered magnetic car mount to easily install and remove your Dash Cam with just one hand.



G Sensor / File Protection

In the event of an impact the device will automatically 'protect' the recording, stopping the file from being over-written. This can also be performed manually, by pressing the 'protect' button. Individual files can also be 'protected' when viewed within playback mode.



Automatic Start / Stop Technology

When the vehicle ignition is turned on, the Dash Cam will start to record automatically. When ignition is turned off, the Dash Cam will perform an automatic shutdown process.



Intelligent Parking Mode

Intelligent Parking Mode triggers recording automatically when the G-Sensor is triggered, keeping your car safe when parked.



Built-in Microphone & Speaker

Record audio to compliment the video recordings.



Nextbase™ Cloud Service

View and share your footage online using the MyNextbase Cloud™ service. Upload your video to the Nextbase™ server to get a shareable link to send to friends, insurers, and social media. Upload your videos via the file upload area on Mynextbase.com. The uploaded file will be deleted after 30 days, when the link will also expire.

Camera Parts & Controls

USB Cover
USB port located under the dust cover.

Camera Lens
Wide angle 140° view.



Dust Cover
Mounting point located under the dust cover. Regulatory markings (FCC, RCM, WEEE) can be found underneath the dust cover.

Speaker
Integrated speaker for audio playback.

Magnetic mount attachment
Attaches to the top of the Rear Window Camera. The adhesive edge can then be applied to the Rear Window.

Camera Lens
Wide angle view of the road behind.



Rear Camera

Rear Camera connector cable
Cable attaches via connector cable to the front Dash Cam.

MicroSD Card Slot
Insert the MicroSD card here, taking care that the gold contacts are facing towards the screen side of the Dash Cam.

Microphone
Integrated microphone for audio recording.

Menu Button
Press to open the Dash Cam's menu system.

Power Button
Press and hold for 2 seconds to turn the Dash Cam On/Off.

Mode Button
Press to select video/photo/playback modes.



Screen
2.5" Inch High Resolution Screen.

Up/Down Buttons
In the Menu: Use to navigate the menus within the camera.
Video Mode: Up button toggles audio recording On/Off. Down button toggles screen On/Off
Playback Mode: Scroll through your videos/photos.

Record
Video Mode: Press to Start/Stop recording
Photo Mode: Press to take photo
In the Menu: Select/OK

Protect Button
Press whilst recording to protect the current file.

LEDs
Right: Blue
- Blue LED denotes charging. It will turn off when charging is complete.
Left: Red
- Red LED is on while the Dash Cam is active. It will flash while recording.

In Vehicle Installation

1

Insert MicroSD Card

Insert a suitable MicroSD card (Class 10, minimum 48/Mbps) in to the Dash Cam, taking care that the gold contacts are facing towards the LCD screen side of the Dash Cam. Push the memory card until it clicks into place.

Note:

- Use the edge of a small coin (or similar object) to push the memory card in place if required. Take care that card has 'clicked' into place, a second push inwards will release the memory card.
- For best results, we recommend using Nextbase branded SD cards.
- Do not remove or insert the memory card when the Dash Cam is turned on. This may damage the memory card, or any stored recordings.

2

Remove dust cover from the Dash Cam

Remove the dust cover that is located on the front of the Dash Cam to gain access to the mounting point. To remove the dust cover, lift the cover away from the body of the Dash Cam.

Note:

- If the Dash Cam is not to be used for a period of time replace the dust cover to help keep the components free of dust or other contaminants.

3

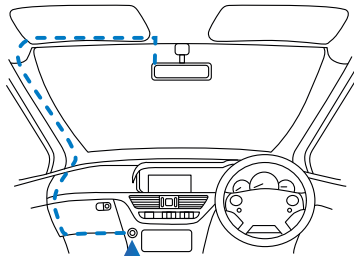
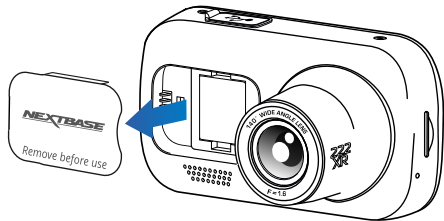
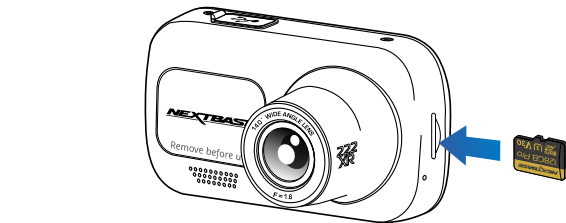
Plug the power cable into the 12-24Vdc outlet of your vehicle

The Dash Cam will automatically power on and start recording once power is available. In some vehicles this will be when connections are made, for others the Dash Cam will power on once the ignition has been turned on. Route the power cable around the windshield to the 12-24Vdc socket. Ensure your view is not obstructed, and the cable is not a distraction. Use the cable fitting tool (bottom, left) included with your Dash Cam to more easily open the lining of your vehicle, within which you can stow the cable.

See page 'Positioning your Dash Cam' for more details.

Note:

- Do NOT wire the Dash Cam directly to a 12Vdc supply by cutting the cigarette plug off the end of the cable, or permanent damage will result.
- Also available to purchase is a Nextbase™ Hardwire Kit. This connects your Dash Cam directly to the vehicle's fusebox to power it leaving your 12Vdc outlet available for Phone / Sat Nav charging. Nextbase Hardwire Kit includes the necessary 12-24Vdc to 5Vdc convertor and battery protection circuitry. See the Nextbase Accessories Manual for further information.



The above diagram is for illustration purposes only.

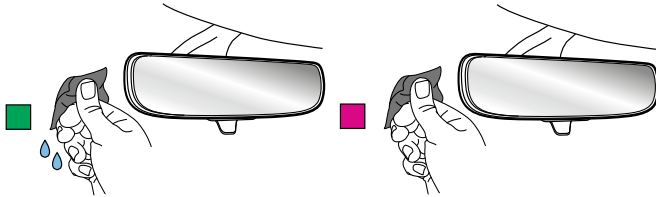


Cable Tidy Tool (included with your Dash Cam)

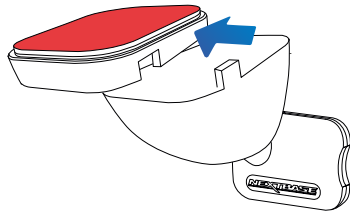
In Vehicle Installation



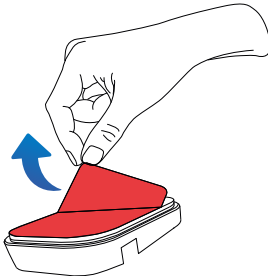
- 4** **Scan the QR Code for adhesive mount installation guide**
Watch the video to see how to best install the adhesive mount. This covers steps 5 - 10.



- 5** **Clean the area of the windscreen you will mount the Dash Cam**
Ensuring that the windscreen is clear of grease and dirt allows the most effective adhesion, keeping your Dash Cam securely mounted. Ideally, choose an area within the wiper zone to allow clear recordings in all weather conditions.
1) Use the wet wipe (green pack) to clean the windscreen in the target area.
2) Use the dry wipe (pink pack) to dry the windscreen in the target area.

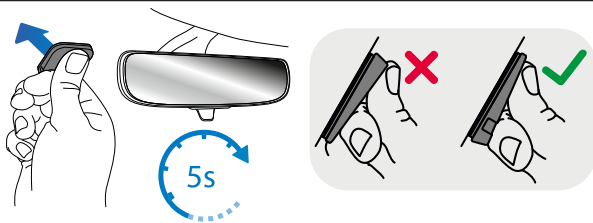


- 6** **Remove the adhesive pad from the Dash Cam mount**
Firmly slide the adhesive pad to the left to detach it from the mount. You will hear a click as the pad detaches.



- 7** **Remove the adhesive cover on the pad**
Gently lift the cover layer to expose the adhesive pad beneath.

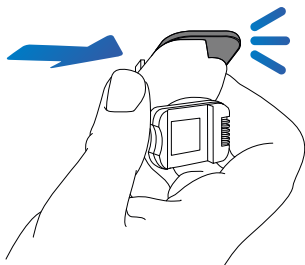
In Vehicle Installation



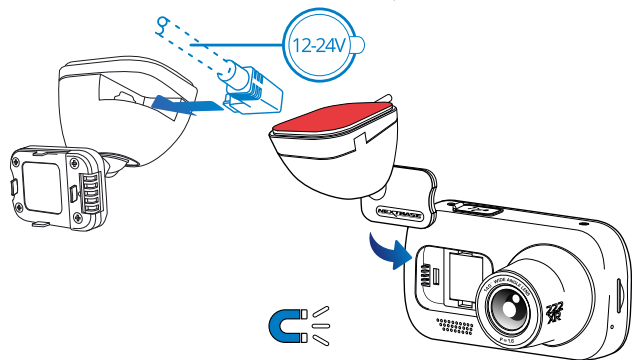
- 8 Attach the Adhesive pad to the windscreen**
Firmly press the adhesive pad to the clean area of windscreen. Press for 5 seconds to ensure a strong bond between the pad and windscreen.

Note

When positioning the pad on the windscreen, ensure that the thick end is pointing down, with the 'notch' at the bottom. This will allow you to attach the mount the correct way up.

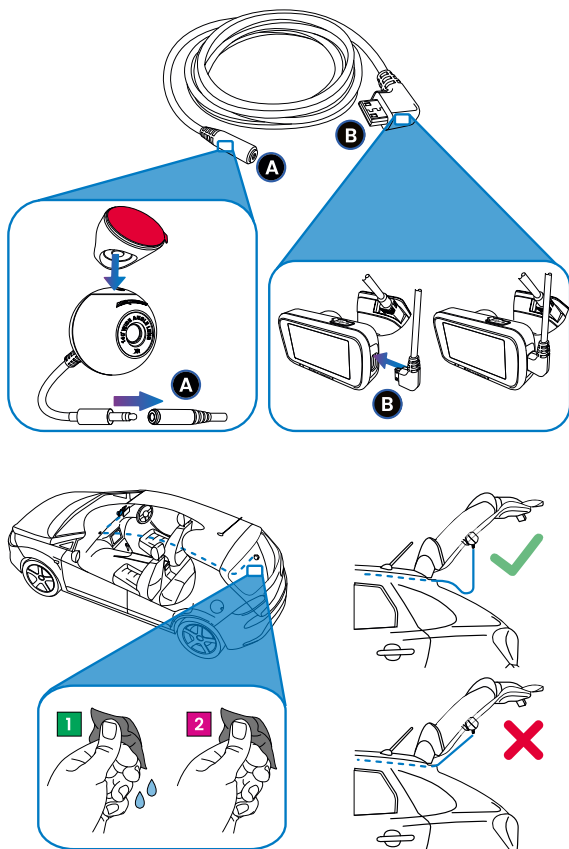


- 9 Reattach the mount to the adhesive pad**
Ensure that the adhesive pad is securely attached to the windscreen. Slide the mount back onto the pad, moving from left to right. A click will be heard when the mount connects to the pad. Check that the mount is securely attached.



- 10 Connect power and Dash Cam**
Connect the power cable to the mount (attached to the windscreen). Connect the Dash Cam to the mount using the magnetic pull to guide the Dash Cam. Once the Dash Cam is connected, check that the Dash Cam feels secure.

In Vehicle Installation



- 11** **Installing the rear Window Camera**
With your Dash Cam turned OFF, simply plug the Rear Window Camera cable into your Dash Cam using the socket on the right hand side and then connect the Rear Window Camera to the cable. Ensure that the Dash Cam is turned OFF with no power being supplied.

- 12** **Wire the connecting cable and prepare the rear window**
Route the connection cable from the front camera to the rear window (blue dotted line). (See left figure), install the cable under the lining of the car so that the driver's view is not obstructed.
As with the windshield, decide where to install the rear window camera.
1) Clean the windscreen using a wet tissue (green wrap).
2) Use a dry tissue (pink wrap) to dry the windscreen of the installation area.

Attention

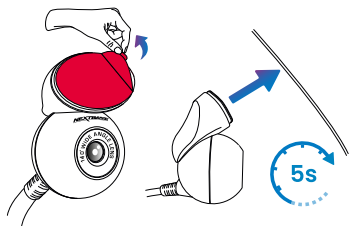
Rear Window Camera Placement

We recommend that you place the camera within reach of the wipers at the top of the rear window to record the clearest possible image. Make sure that the defogger does not interfere with your vision.

Opening and closing the trunk

When opening the trunk, leave about 30-40 cm of loose cable at the rear of the vehicle to allow the boot to open comfortably (see left figure).

In Vehicle Installation

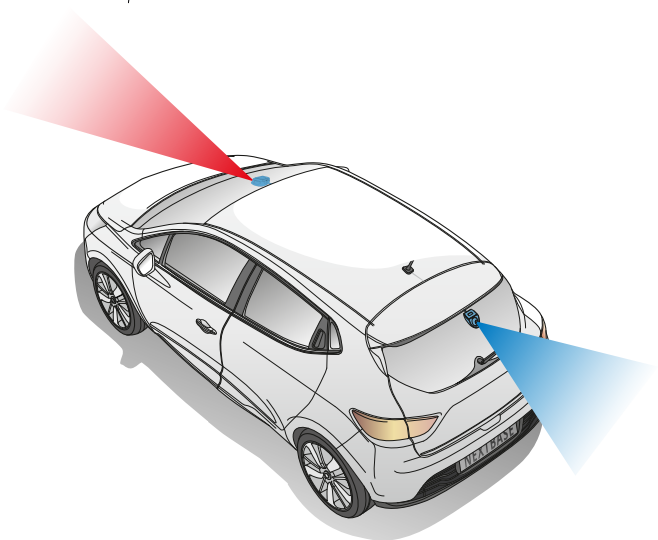


13

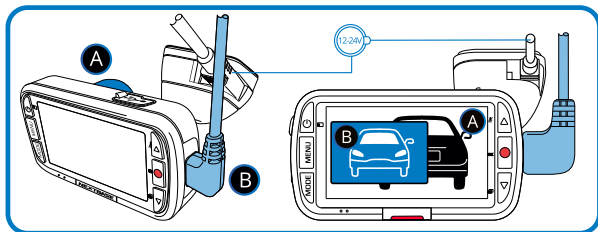
Installing the Rear Window Camera

Once the rear window camera is positioned and the cable is loose enough, gently peel off the cover sheet to expose the adhesive pad below. Press the adhesive pad firmly against the clean part of the windshield. Keep pressing for 5 seconds to ensure that the pad adheres to the windshield.

The figure at the bottom left shows the installation location of both common cameras and the area where they can cover.



In Vehicle Installation



14

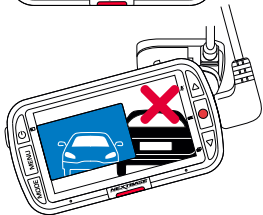
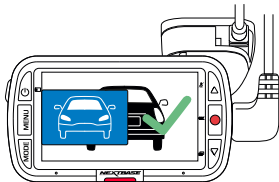
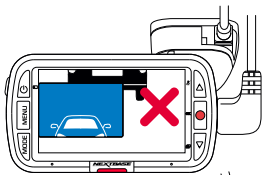
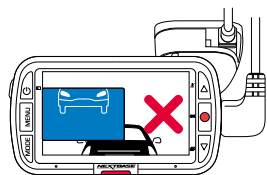
Adjust the Dash Cam

With the mount attached to the windscreen, ensure that objects on the Dash Cam display are level and adjust as required. Ensure that the road ahead is at the centre of the image, in the central third of the display. If too much of the sky is visible it may risk underexposing details on the road; ensure that the road ahead is clearly visible on the Dash Cam display.

To adjust the rear window camera, follow the steps as above. We recommend that you check the video display on the Dash Cam screen while having someone adjust your camera.

The figure at the top left shows where the video from each camera appears on the screen. The image of the front camera is displayed full screen, and the image of the rear window camera is displayed in a small frame at the left.

Do not try to adjust this unit while driving.



Remove adhesive residue

When removing the adhesive base from the windshield, use warm soapy water or an alcohol-based solution to remove the sticky residue and ensure that the windshield remains clean and dirt-free. If you leave the residue on the windshield for a long time, it will be difficult to remove.

If hot water or alcoholic solution does not work, it may be necessary to use a small sharp knife.

In that case, protect your fingers and use the blade flat against the surface of the glass to avoid scratching the glass.

Position your Dash Cam



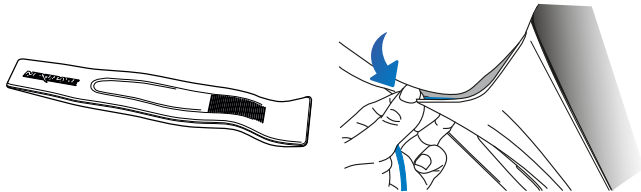
Before using the device on your windscreen, check the state and local laws and ordinances where you drive. Some laws prohibit or restrict the placement of objects on the windscreen of a motor vehicle. IT IS THE USER'S RESPONSIBILITY TO MOUNT THE DEVICE IN COMPLIANCE WITH ALL APPLICABLE LAWS AND ORDINANCES.

Always mount your Nextbase™ device in a location that does not obstruct the driver's view of the road. Nextbase does not assume any responsibility for any fines, penalties, or damages that may be incurred as a result of any state or local law or ordinance relating to the use of your Nextbase device.

As per the installation instructions, you must install the Dash Cam so it does NOT obstruct the driver's view of the road, preferably on the passenger side of the vehicle and behind the rear view mirror. The Dash Cam needs to view through a clear section of windscreen in an area swept by the windscreen wipers. However, the Dash Cam should be installed so as not to intrude significantly within the wiped area. A 40mm intrusion into the green wiped area is the maximum permitted by UK law.

Hiding the Cable

Make sure the hanging cable does not obstruct your view out of your rear window. Ensure that there are no kinks in the cable as you are stowing it. If necessary, use the cable tidy tool supplied with your Dash Cam; this can be used to help pry open the lining of your car (see illustration below).



- Do NOT mount the Dash Cam in front of the driver, as depicted by the red area in the illustration to the left of this page.
- When installing the Dash Cam in a vehicle, always place the device securely against the windscreen and where possible conceal the power cable under trim.
- Make sure that the Dash Cam power cable does not interfere with the drivers operating controls, such as the steering wheel, pedals or gear levers.
- Do NOT mount the Dash Cam in front of an airbag field of deployment or in a position to obscure any mirrors.
- Clean the windscreen at the point of location, prior to fitting the Dash Cam.
- It is recommended NOT to operate the Dash Cam whilst driving. The automatic Start-Stop technology incorporated within the device negates any need to operate the controls whilst driving.
- Adjust any settings or review recordings whilst stationary, not whilst driving.
- After the preliminary SETUP has been carried out upon the Dash Cam, adjust the Screen Saver settings to either ON or Speed display (showing only your speed). Turning the Screen Saver ON will blank the screen 30 seconds after starting the vehicle and therefore the screen will NOT be a distraction to the driver.

Accessories

Multiple accessories can be purchased for your Nextbase Dash Cam, including a rear window camera, Dual USB charger, and a rear facing camera. Some of these products can effect where you should position your camera.

For more information on how to position and use these products, download the 'Nextbase Accessories Manual' PDF at www.nextbase.com.



First Time Use



Before you can use your Dash Cam, it is essential to make sure it is fully charged. Connect your Dash Cam via the USB port to a home power source such as a PC or home USB socket for approximately 2 hours.

To ensure the set up of this Dash Cam is as quick and simple as possible, there is an easy to follow 'First Time Use' menu.

This menu is used to set Language, Time, and Date.

This menu will appear when:



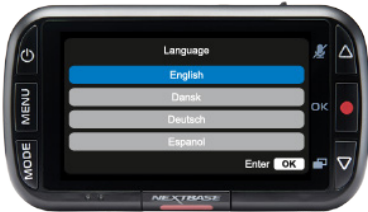
This menu will appear when:

1. The Dash Cam is first turned on.
2. There has been a Firmware Update applied to the Dash Cam and 'Keep User Settings' has been set to OFF. If it is set to ON, your Dash Cam will start normally, with your settings intact.
3. After the Dash Cam's settings have been reset, by using the 'Default Settings' option in the Setup Menu.

Follow the on-screen instruction to select the Language, Time and date.

The First Time Use menu is in place to get you up and running quickly and smoothly. The settings you choose during First Time Use can be changed at any later time in the setup menus.

Menus



The default settings have been carefully selected to allow you to use your Dash Cam without the need to change any settings. However, should you wish to change a setting then please see below:

- Use the up and down buttons to highlight the function that you'd like to change and press the OK button to enter the settings submenu.
- Once in the submenu, use the up and down buttons to highlight the required setting and then press OK to confirm your selection and return to the Video Menu.
- Press the MENU button twice to return to video mode.

Notes:

- Menus are not accessible whilst the Dash Cam is recording.
- Within the Setup Menu which is accessed by pressing the MENU button twice, there is a 'Default Settings' option to allow you to reset the Dash Cam to the factory defaults, if required.

Settings

- 1 Resolution**
Change your Dash Cam's recording resolution; 1080p or 720p.
- 2 Exposure**
Adjust the exposure level for different lighting conditions.
- 3 Audio**
Turn On/Off the microphone for video recording.
- 4 Video Length**
Set the length of the individual recorded video files. The Dash Cam will continue recording, filling the memory card. When the memory card becomes full, the oldest file will be automatically deleted to make space for the new recording.
Note
Old Protected Files can be overwritten; back up important files as soon as possible to avoid losing your footage. See page 6 for more details. If 'Recording History' is set to Minimum (as required in some territories) the Video Length is locked at 1 minute. This cannot be changed until Recording History is set to Maximum.
- 5 Stamps**
Turn On/Off the Time & date stamps shown on recorded files.
- 6 G Sensor**
Turn off or adjust the sensitivity of the internal G Sensor. The G Sensor detects forces which will protect the current recording in the event of a collision. The higher the G Sensor sensitivity, the less force will be needed to trigger automatic file protection.
- 7 Format SD Card**
Format the inserted SD card. This will delete all content. If the format is unsuccessful, a message will appear on the display; "Format failed, please try another SD Card (U3, 256 GB Max)."
Note For stable performance, it is recommended that you format the SD card every 2-3 weeks. You should only do this AFTER you've downloaded any files from the card that you may want to keep.
- 8 Time & Date**
Adjust the time & date as required. Press MENU to exit and return to the Setup Menu.
Note Time and date settings will be over-written upon satellite connection.

9 Language
Select your preferred language.

10 Screen Saver
Turn on the screen saver function to shut down the screen after 30 seconds without any interaction. With the screen off, recording will continue as normal. Touch the display to re-open the screen. You can also choose for the Screen Saver to show your current speed (GPS signal required).

11 Alerts
Turn On/Off the ascending/descending beeps that sound when a recording starts/stops, the tone when there is an SD Card error, and the chime that sounds when a file is protected.

12 Auto Power Off
While recording, if Auto Power Off is turned OFF and the Dash Cam loses power: the Dash Cam will turn off after 10 seconds.
While recording, if Auto Power Off is turned ON and the Dash Cam loses power: the Dash Cam will turn off after 30 seconds.

13 Number Plate
Input your vehicle's number plate to add a number plate stamp to your recordings.

14 Parking Mode
When Parking Mode has been turned on, the Dash Cam enters standby mode when the 12Vdc supply has been turned OFF (typically removing your ignition key). The Dash Cam will also enter standby mode if no physical movement is detected for 5 minutes, this is designed to allow use of a permanent 12Vdc supply i.e hard-wire kit. (See page 6 for more details). Should physical movement of the vehicle be detected, the Dash Cam will power on and start recording a 45 second protected video. If no further physical movement is detected then the Dash Cam physical movement is detected subsequently, then the camera will continue to record normally.

15 Reversing Camera
When 'Reversing Camera' is turned ON, the full screen Rear View will be flipped horizontally to mimic using a rear view mirror.

Do not solely rely on 'Reversing Camera' when reversing; always be aware of your surroundings.

16 Recording History
In some territories, there are laws prohibiting the amount of footage your Dash Cam should hold. The default setting is 'Maximum', where your Dash Cam records and stores videos without restriction.
If 'Minimum' is selected you will first be asked to Format (wipe) your SD Card; be sure to back up any files you wish to keep before doing this. If you choose not to Format the SD Card, no action is taken and the function will not be activated. Once the SD Card has been formatted, the file recording length will be automatically set to 1 minute. The Dash Cam will now be limited to storing only 4 unprotected files at any one time. When a new file is recorded it will overwrite the oldest file, keeping the number of stored files at the maximum of 4.
As protected files cannot be overwritten, these do not count towards the 4 file maximum, and are stored to the capacity of the SD Card.

17 System Info
Information such as Dash Cam model, Battery status, Firmware version, and SD card information can be found here. This information covers multiple screens (pages), swipe left or right on the display to scroll through as required.

18 Keep User Settings
Turn this ON in order to keep your preferred individual user settings during the Dash Cam firmware update process.
Select OFF in order to clear all user settings and return them to defaults during the Dash Cam update process.

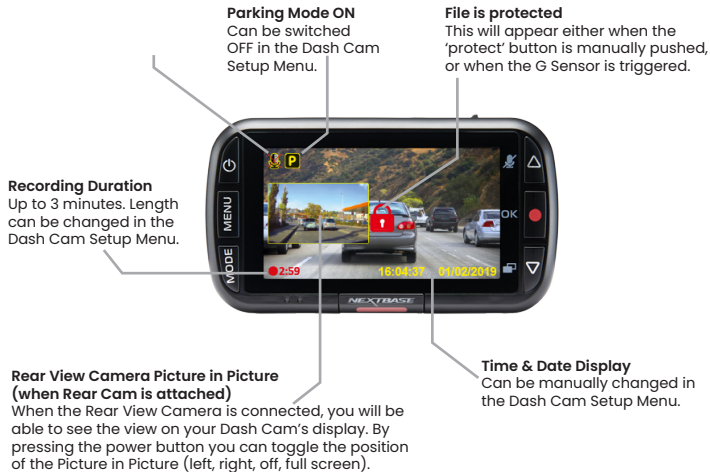
19 Default Settings
Resets the Dash Cam to default settings. Your recordings will not be affected.

Please note there will be a delay between the trigger event and the start of the recording while the Dash Cam turns on.

On Screen Icons

Video Mode

The key below explains the various information displayed on the screen when your Dash Cam is in Video mode, some icons will only be displayed once the relevant function has been selected within the Video menu, as described below.



Playback Mode

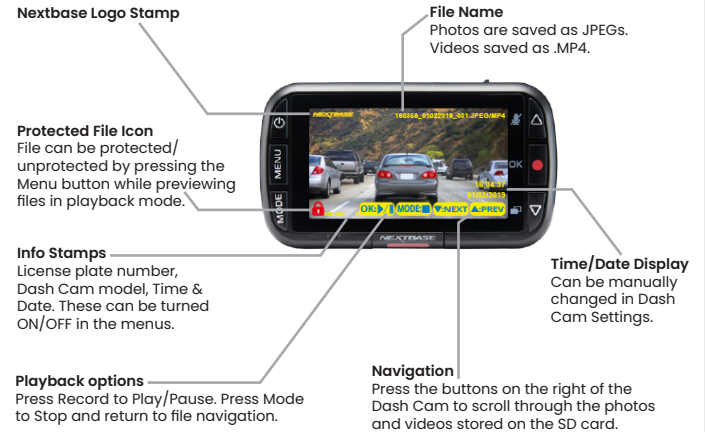
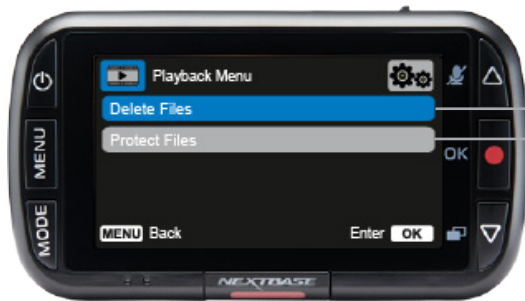


Photo Mode



Delete & Protect Files

If the Menu button is pressed while scrolling through your videos, you will open the Playback Menu, giving you the option to protect, unprotect, or delete files. You can use the Menu button as a back button while in the menu system.



How to Delete Files

Using the Up and Down arrows, select 'Delete Files'. On the next page, you will be asked if you want to ONLY delete the video/photo you are on, or if you would like to delete all (unprotected) files.

Once you have made your selection, you will be asked to confirm your choice.

When your choice is confirmed, you will be redirected back to Playback Mode to continue scrolling through your videos and photos.

How to Protect/Unprotect Files

Using the Up and Down arrows, select 'Protect Files'. On the next page, you will be asked if you want to Protect or Unprotect the file you are currently on.

You cannot protect a file that is already protected, and likewise cannot unprotect a file that is already unprotected. This action will have no effect and will divert back to the Playback display.

When you successfully protect or unprotect a file, a red padlock icon will be added or removed, respectively. This will be visible on the Playback display which you will be immediately diverted to, following your selection.



The red padlock icon will be added when you PROTECT a video/photo.

The red padlock icon will be removed when you UNPROTECT a video/photo.

Protected Files cannot be deleted. Unprotect a file first to delete

MyNextbase Player - Playback



View, edit, and share your footage on your computer with the new easy to use free PC/Mac software. The software also allows you to view in-depth analysis of your journeys, including information on dates and times, speed, GPS location, and more. Connect your Dash Cam via USB or use an SD card reader (integrated or external). When you connect your Dash Cam, if MyNextbase Player™ is already open it will ask if you would like to import all files directly to your video library. MyNextbase Player can be downloaded for free from the 'Support and Downloads' page at: www.nextbase.com.

Snapshot

During video playback, pressing 'Snapshot' will Pause the video. You can move one frame at a time using the video controls beneath the playback timeline or the left/right arrow keys. Clicking 'Save Image' in the dialogue box will save the image as a PNG in a destination of your choice.

Edit Video

Join multiple videos together, trim the clips, add annotations and titles screen, and alter output settings. See the next page for more details.

Share Video

Allows you to easily share your Dash Cam videos with insurance companies and social media. See MyNextbase Cloud™ page for more details.

Settings

Opens the settings tab for MyNextbase Player. Options available include: language, speed units, software update options, map provider (Google Maps™ or Open Street Maps), connection tips, error reports, and Nextbase™ special offers.

Update Dash Cam

You can update your Dash Cam's firmware through MyNextbase Player; please note that an internet connection is required to access the latest firmware version. For more information, see Firmware Updates information page.

Add Video

Add a video to the file list, ready for you to view, edit, and share. Clicking this will open your default file explorer; your Dash Cam/SD Card will appear as an external device. Once located, select the file(s) you wish to import. You can also drag and drop your videos anywhere on the player to add videos.

Playback Window

Displays Dash Cam videos playing in MyNextbase Player.

Zoom

Zoom in/out of the playback window, or use the scroll wheel on your mouse.

Speed Display

Speed data for the currently playing video; distance travelled, average and max speeds.

GPS Display

Shows GPS data for the currently playing video; co-ordinates and compass direction.

Video Timeline

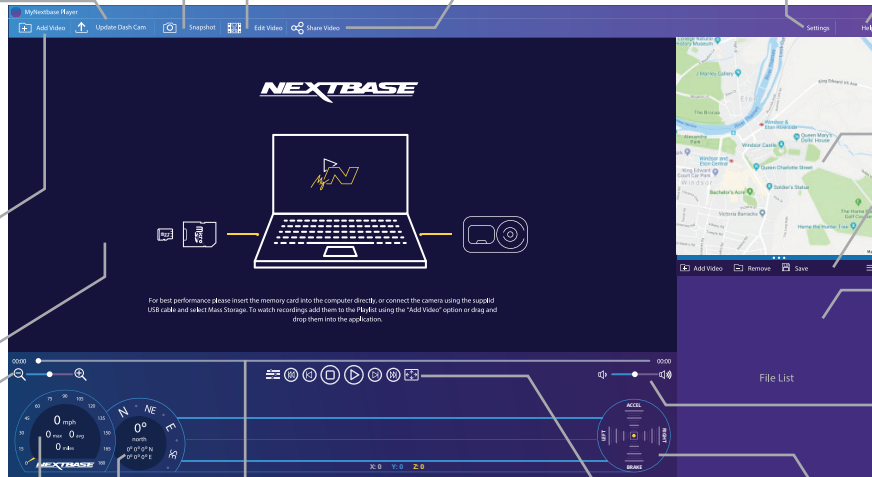
Your playback position. Position the slider to move to a specific point in the video.

Video Playback Controls

Control playback of your videos. Includes colour adjustment, next/previous video, next/previous frame, stop, play, pause, fullscreen.

G Sensor Timeline and Display

Live G Sensor data for the currently playing video.



Help

Help menu for MyNextbase Player; how to use, check for updates, Nextbase website, help & support, send diagnostics, contact us, and about.

Map

Displays your journey if the video playing has GPS data.

File Management Bar

Add, remove, save, and filter videos in your file list.

File List

Your video library, ready for playback and editing. This list can be filtered in a number of ways, including by name, date, resolution, or whether the file is protected.

Volume Controls

Control the volume of the audio on the currently playing video.

MyNextbase Player – Edit



To use MyNextbase Player™ to edit your recorded files, you need to ensure that the file you wish to edit is currently playing in the Playback Window. You can do this by double clicking the file as it appears in the File List window. When the file is playing, click on the 'Edit' button to begin the 6 step editing process.

1 Join Videos

The videos you join together must all be the same resolution. Your video will have the option to add additional videos before or after the chosen video file. Clicking either of these buttons will open up the list of files in your library that can be added. The order of the video files can be altered by clicking and dragging a video. To remove a video, hover over the chosen file and a 'Remove Video' option will appear. Once you are happy with the video(s) selected, click on the continue button to move to step 2.

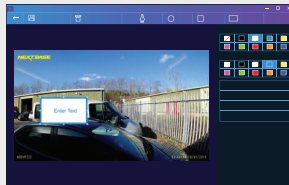
2 Trim Video

Shorten your selected clip to only include the incident or event that you are interested in. A green marker on the timeline indicates the beginning of your video. A red marker on the timeline indicates the end of your video. These can be dragged to a point on the Timeline of your choosing. The white marker indicates your current playback position.

3 Annotate Video

Highlight an object or add text to your video. When you annotate a frame, your video will pause at the specified frame and display annotations you have added. The video will resume after 4 seconds.

To add annotations, find the frame you wish to annotate using the white marker, and use the 'Add Annotation' button. Along the top of the annotation screen you will see the annotation tools; Draw, Circle, Square, Rectangle, and Text. Clicking any of these options will add an editable annotation to that frame. When you have finished your annotation, click 'Save and Close' to return to the Add Annotation screen, where more annotations can be added. When finished, press 'Continue' to proceed.



4 Add Title Screen (Optional)

Add a title screen to your video. The title will be displayed for 4 seconds at the start of your video. To add a title, click inside the white rectangle and type the desired title. Press 'Continue' to proceed.

5 Output Settings (Optional)

The final step allows you to specify the quality of your video file and the data included. Video Resolution determines the quality of the video footage; by default the Video Resolution will be set to output at the same quality as the original files. Stamps for GPS, number plate, and time can also be removed, as well as the audio and GPS data from the video by ticking the corresponding box. Once the data has been removed it cannot be added back into the edited video. This will not affect the original file.

Specify the name of the file being created and the location that you would like it saved. When you have chosen your output settings click on the 'Confirm' button to begin processing your video.

6 Process Video

MyNextbase Player will process your video clip(s) and edits, and produce a single file in the location specified. This can take some time and will depend on the number and length of video files being joined and video resolution. Once the video has been processed, it will be added to your MyNextbase Player file list.

Video Sharing

Videos can be shared to social media and insurers through the 'Share Video' button. Videos can also be upload to the Nextbase™ server; you will be e-mailed a secure link to view or download your video. This link can be sent to your insurer, without the need to transfer a large video file. Videos will be automatically deleted 30 days after upload.

More Features

When a video is being played back in the Playback Window, press 'Ctrl + i' to open a window displaying all of the metadata for that video including information such as, file name and size, resolution and frame rate, max and average speeds, GPS information, and more.

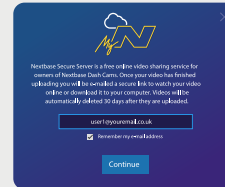
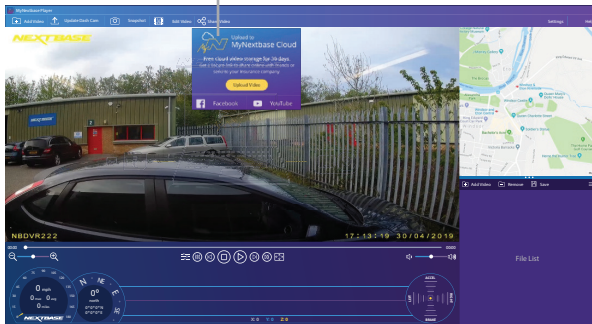
Some functions, such as GPS data, are available only on select models

MyNextbase Cloud™

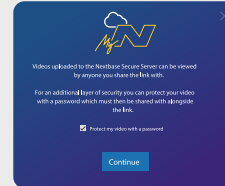


MyNextbase Cloud is our free online video sharing service where you can safely and securely store your Dash Cam files. Upload your file to the Nextbase™ Server using the 'Share Video' function on either MyNextbase Player™, or the MyNextbase Connect™ app. Please note that upload times are dependent on video file size. Once your video has finished uploading you will be given a secure link to watch your video online and/or download it to your computer/device. This link can be shared with others (including your insurer) to view/download the video. Videos will be automatically deleted 30 days after they are uploaded.

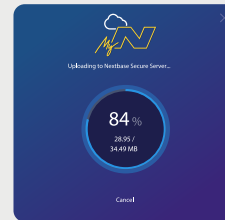
Selecting 'Share Video' will allow you to choose where to upload your video to. Select 'Share with Nextbase' to upload your video to MyNextbase Cloud, and bring up the upload window.



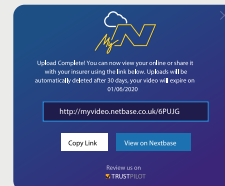
The upload window will guide you through the upload process; next, you will be prompted to enter your e-mail.



You will have the option to protect your video with a password.



Once the setup of the video has been decided, the upload will begin. Upload times are dependent on file size and internet speed.

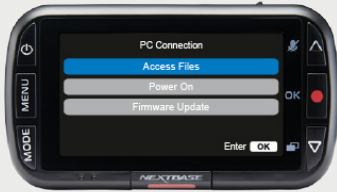


Once upload has finished, you'll be given a unique web address to link to your video hosted on the Nextbase server. This link can be shared with others (including your insurer) so that they can view/download the video.

When you first view the video online you may see this message: "This video was uploaded very recently, it may take up to half an hour to generate the online preview however your video can be downloaded immediately."

This is normal and the preview will become available within half an hour.

PC Connection



Use the supplied USB cable to connect the Dash Cam directly to your PC via the USB socket; do NOT connect the USB cable to the Powered Mount. Once connected the Dash Cam will turn on with three options available; 'Access Files', 'Power On', and 'Update Firmware', as described below.

Access Files (Windows)

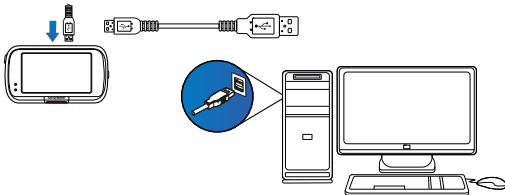
The Dash Cam will function as a card reader for your PC. An extra drive will appear, and you will be able to view / manage the stored files on the MicroSD card in the Dash Cam. You can view your files using MyNextbase Player™, free editing and sharing software available to download from www.nextbase.com. The Dash Cam is a 'read-only' device; uploading files to the SD card is not possible.

Access Files (Mac)

The Dash Cam will function as a card reader for your MAC. The 'Nextbase' external USB disk icon will appear on your MAC and you will be able to view and/or manage stored files. You can view your files using MyNextbase Player™, free editing and sharing software available to download from www.nextbase.com. The Dash Cam is a 'read-only' device; uploading files to the SD card is not possible. When the Dash Cam is connected to either a Windows or Mac system you will see a pop up on the Dash Cam that will read 'Use MyNextbase Player to review, edit, save, and share recordings'.

Power On (Windows & Mac)

When selected, the Dash Cam will power on with all functions available. This includes charging of the internal battery, a full charge will take approximately 2 hours.



Always turn OFF the Dash Cam before disconnecting from your PC/Mac.

Firmware Updates



Firmware controls the basic functioning of the Dash Cam. If your Dash Cam is not functioning correctly, you may need to update your firmware. Firmware updates may also be released to fix bugs, and improve the general functionality of the Dash Cam. It's important to keep the firmware on your Dash Cam up to date so it can operate to its full capacity.

How to Check your Dash Cam's current Firmware Version

Within the Setup Menu, on page 4, select 'System Info'. Here you will find information relating to your Dash Cam, including what firmware version is currently active (i.e R05.3).

Ways to Update Firmware on your Dash Cam

There are a number of ways for you to update your firmware version. Connect your Dash Cam's SD Card to PC or Mac™ using a card reader. This will open a file explorer drive, and show the contents of your SD Card. Go to the 'Support & Downloads' page on nextbase.com and download the newest firmware version (i.e R05.4); this will download as a .bin file. Drag and drop the .bin file to the SD Card. Eject the SD Card and insert it back into your Dash Cam. When power is supplied to your Dash Cam it will turn on, and will automatically begin updating. While updating, the red LED to the left of the screen will start flashing. Once the update has been completed your Dash Cam will automatically restart. If you have a PC, You can also update your Dash Cam using the 'Update Dash Cam' function on MyNextbase Player™. This function will NOT work on a Mac. Connect your Dash Cam to PC via USB, select 'Firmware Update' and open up MyNextbase Player™ (available to download for free from nextbase.com). Select 'Update Dash Cam'. A pop-up will appear on your PC describing your current firmware, and the latest version available. When you select 'Update', your Dash Cam will automatically begin updating. While the Dash Cam is updating, the red LED will flash. Once the update has been completed your Dash Cam will automatically restart. Please note that an internet connection is required for the Dash Cam to be updated.

Notes

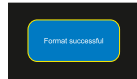
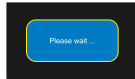
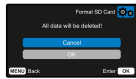
If 'Keep User Settings' is turned ON in the Setup Menu, your Dash Cam will boot up normally, straight into video live view mode, ready to use. If 'Keep User Settings' is turned OFF, after the update is complete, the Dash Cam will boot up into the First Time Use menu, which must be completed before the Dash Cam can be used. Files saved on the SD card will not be affected by the firmware update.

Nextbase SD Cards

For best results, we recommend using our Nextbase branded SD cards with your Dash Cam, available to purchase online from nextbase.com, or your nearest retailer.



We recommend formatting your SD Card every 2 weeks to ensure that there is enough space to record and store new footage. When formatting, protected files WILL be deleted. If you wish to keep these protected files, you must back them up externally, most commonly by saving files to a desktop computer, or another secure storage point. To clear your SD card, go to the 'Format SD Card' function in your Dash Cam's Setup settings Menu and follow the instructions on screen.



Which SD Card should I use in a Dash Cam?

Nextbase have designed SD cards specifically for use in our Dash Cams. We work directly with the factory to ensure consistency of the SD card quality. Nextbase have spent years testing, training, and developing SD cards to optimise their performance with our Dash Cams.

Due to the differences in technology an SD card that works with a mobile phone or computer won't necessarily work well with a Dash Cam. The main differences between SD cards are the storage size (16GB-128GB) and the READ speed. READ speed isn't important when it comes to Dash Cams, as a Dash Cam WRITES data to the SD card when recording. The ability to maintain a high WRITE speed consistently is what Nextbase SD cards are designed to do better than competitor SD cards. Fluctuations in WRITE speed causes video footage to buffer, and in some cases stop recording entirely.

A large requirement our Dash Cams place on the SD card is the ability to re-WRITE over older footage when the SD card becomes full. This means the Dash Cam is always Loop Recording; when the Dash Cam is On, it is recording. Most non-Nextbase SD cards struggle to do this as efficiently as our SD cards. We always recommend using a Nextbase SD card with our Dash Cams to ensure max compatibility, and to minimize the loss of video data.

SD Card Q&A

Q) "Why should I buy a Nextbase branded SD card? Can't I just use my card?"
A) Our cameras have different requirements to other recording devices; this is because they need to keep recording when the card is full whilst overwriting the oldest unprotected files at the same time.

Q) "Why are Nextbase SD cards more expensive than other brands' SD card?"
A) Years of research and development have led to the creation of an SD card with superior abilities that ensures it works efficiently with our Dash Cams. The Dash Cams have higher technological requirements than a mobile phone or digital camera, thus the larger price tag.

Q) "Do non-Nextbase SD cards work at all?"
A) A card that is not made for a Dash Cam may work well in the beginning, but the effectiveness can decrease over time as the SD card is put under sustained strain of re-WRITING video. Our SD cards ensure longevity with our specific recording requirements. In times when you need video evidence of an incident, we cannot guarantee the effectiveness of using other brands of SD cards in our Dash Cams.

Q) "I have a rear camera module, which SD card do I need?"
A) If you are using a Rear Camera module with your Dash Cam you need a U3 SD card. Using a Rear Camera approximately double the amount of recordings, as there are 2 videos streams. In this case, we recommend larger SD cards to accommodate the increased load of videos.

Q) "What errors may I encounter using a faulty or incompatible SD card?"
A) You may experience any of the following:
SD error messages, Recording failure, Automatic recording failure, Frozen Screen, Gaps between recordings, Corrupted or unplayable files, Failure to startup or shutdown, Inoperable buttons.
If you experience any of the faults listed above, we strongly recommend that you replace your SD card with a Nextbase SD card. All our Dash Cams are tested using Nextbase branded SD cards, therefore we cannot attest to the compatibility of other manufacturer's products. For best results we always recommend using Nextbase branded cards.

Frequently Asked Questions

Video Image is blurred. Remove the protective lens cover, clean the lens, make sure the windshield is clean and clear of grease, dirt, and debris. Ensure that the Polarising Filter has been set properly; see instruction page for set up guide.

I cannot insert the MicroSD card. MicroSD cards are very small and require delicate use. Align the card with the diagram shown upon the Dash Cam and insert the card until you feel a slight spring resistance. You now need to push the card, using your finger nail until you hear and feel a small click. Release pressure and the card will stay retained within the Dash Cam. If you are having difficulty, use the edge of a small coin.

I cannot remove the MicroSD card. With the card installed, using your fingernail, you now need to push the card further inwards slightly, until you hear and feel a small click. If you are having difficulty, use the edge of a small coin. Release pressure and the MicroSD card will spring out far enough for you to take a hold of it.

Video Files cannot be played on my computer. The video files from the Dash Cam are in .MP4 format and may not be compatible with your PC if suitable playback software is not installed.

Video File playback is jumpy. Remove the SD card and format to remove non-contiguous files. For best recording use a Nextbase branded U3 micro SD card of 8 to 256GB. PC may not be sufficient for the playback task, try a different PC. Copy the recorded video files onto the PC / Mac for playback directly rather than use the Dash Cam as a card reader, as the USB system on your PC may be too slow for HD video playback.

The sound is not synchronised with video during playback. The Codecs upon your PC may not be compatible or the latest standard. Download the latest Codecs from: www.nextbase.com.

Video has no sound. Ensure that 'Audio' setting is turned ON within the Video Menu.

Photograph is blurred. Make sure the Dash Cam is still while taking the photo. The Dash Cam has a minimum focal range of around 2 meters. Objects closer than this are likely to become blurred.

I can only record a few minutes of video on my MicroSD card. Change the recording size (Video Length function) to a smaller size. Increase the size of the MicroSD card. Max 128/256GB. In the Setup Menu, ensure that Recording History is set to Maximum. Minimum limits the total number of recordings on your Dash Cam to 4.

Access Files does not work. The Access Files function will work on both Windows and Mac. Restart the PC, as this may be required for the necessary driver to be loaded correctly. Disconnect and reconnect the Dash Cam. Be aware that you cannot transfer files to the Dash Cam in 'Access Files'. Files can be transferred to the SD Card using an SD Card reader.

I cannot save files to the memory card when the Dash Cam is connected to my computer under 'Access Files'. The Dash Cam is a 'read-only' device. It is not recommended to save files from other sources to the same memory that you will use for recording within the Dash Cam, as these may have a negative effect on the performance of the Dash Cam.

My Dash Cam shuts down by itself after a while. Either the battery has gone flat, there is no power to the Dash Cam and the Auto Power Off period has been triggered or Parking Mode has been turned on and no vehicle movement has been detected for 5 minutes.

No power to my Dash Cam but it works on my computer. The cigarette power cable is not working. Inspect the fuse in the Car Power Cable plug. Replacement fuse = 2A 32mm type. If the fuse is found to be blown, inspect the power cable for damage which may have caused the fuse to blow.

I can't delete files on my SD card within the Dash Cam. Check to see if these files are 'protected'. If so please follow instructions to 'un-protect'.

Frequently Asked Questions

The Dash Cam screen blanks after a few minutes. The screen saver is set to ON. Change settings to OFF if required. Default setting is OFF.

I get the message: "Cluster size wrong. Please format SD card" on screen. The SD card has been formatted in another device and the Cluster size is not compatible. Use the Setup Menu to format the SD card from within the SD card.

The battery will not charge. Ensure the Dash Cam is connected to a reliable power source and that the supplied Car Power Cable is being used, with the blue LED lit.

The battery only lasts 30 seconds. The battery will only receive charge when the Dash Cam is connected to a power source. Charging takes approximately 2 hours and a full charge is indicated when the blue LED on the Dash Cam goes out. To charge, take the camera indoors and charge it for 2 hours; once fully charged, check to see if the problem persists. If it persists, the car power supply may be causing the issue.

The battery only lasts 10 - 15 minutes. This is normal, the battery design allows the 'Auto Power Off' feature to function in event of power loss within the vehicle. It is not intended as an alternative power source to replace the supplied car adaptor.

I get the message "SD Card Error" on screen. The SD card has become unusable by the Dash Cam. Back up useful files to your PC and then Format your SD card from within the Dash Cam setup menu.

I get the message "Card Full" on screen. The SD card has become full as there are too many protected files which cannot be deleted to allow for further recording to take place. Transfer useful files to your PC and delete unnecessary files, or Format the SD card from within the Dash Cam setup menu.

When connected to a TV/monitor via HDMI cable, there is no image visible. The Dash Cam is not compatible with all TVs and monitors. Ensure that all connections are correctly attached.

I have turned on 'Parking Mode' and now can't stop the recording. The Dash Cam will start recording whenever motion is detected. To turn off Parking Mode shutdown the Dash Cam and remove the SD card, this will avoid recording being activated accidentally. Switch the Dash Cam On and turn off 'Parking Mode' in the menu.

When I press the Menu button nothing happens. This is normal during recording. Stop the recording before pressing the MENU button. If recording re-starts before you can press MENU, then see the Parking Mode section above.

Downloading files from nextbase.com using Google Chrome results in a Malicious Software message. This is not a cause for concern, as this message will appear whenever new software is downloaded from the internet. Simply go to the settings within Google Chrome and turn off the malicious software protection temporarily to download and install the playback software. Reinstate previous Google Chrome settings afterwards.

There's no PC Connection Screen when connected to my computer. Try multiple USB ports and an alternative mini USB cable (if possible). Please ensure it is inserted into the USB port on the Dash Cam and not into the mount.

My Camera feels warm when it is on. It's normal for the camera to feel warm when in use, especially when it's recording high definition video or communicating via Wi-Fi.

Alexa is not working on my Dash Cam. Ensure you have both the Alexa App and the MyNextbase Connect app installed. We recommend signing into Alexa through the MyNextbase Connect home screen to ensure that the apps are successfully paired. Ensure that the volume is turned up on your paired smartphone.

The QR codes are not working. There is some variability in the effectiveness of QR Code scanning apps. If yours is not working, try a different one. If the problem persists, you can visit the Google Play Store/Apple App Store and search for MyNextbase Connect or Amazon Alexa manually.

CE Mark Information (Conformité Européenne)

The CE (Conformité Européenne) mark is a symbol (below) printed on products to indicate its conformity with health, safety, and environmental protection standards for products sold within Europe. It is used on many products across many industries (for example, SD cards) as a mark of compliance with European standards.



In recent years, many variations of this mark have appeared in the market. While similar, the mark above is the only variant that is associated with, and declares compliance with European standards. Other marks, like the ones below, do not guarantee that the product it is attached to or is compliant with European standards for sale in the European Economic Area (EEA).



The main difference between a legitimate CE mark and a misused CE mark is the spacing of the letters. The letters, C and E, tend to be formed identically, however the spacing between them is what separates the real from the false. The images below show how the letters should be spaced. There will never be additional markings such as a border or circle used on a legitimate CE Mark.



As products without the correct CE marking are not guaranteed to comply with European Health and Safety standards, those products are potentially less reliable and could pose a safety risk. Be aware of the CE marking when purchasing electrical products. The descriptions above of false CE markings are not comprehensive; be aware that new variations may appear on the market.

Software License Agreement

By using the device, you agree to be bound by the terms and conditions of the following software license agreement.

Nextbase™ grants to you for the period for which you possess the relevant device a non-exclusive, non-transferrable (save in circumstances where you sell or transfer the relevant device to another person – please see below for more details) a limited license to use the software embedded in this device (the “Software”) in binary executable form in the normal operation of the product together with any documentation and material (whether printed or on-line) made available by Nextbase in respect of the Software (the “Documentation”). Title, ownership rights, and intellectual property rights in and to the Software and the Documentation remain in Nextbase and/or its third-party providers.

You acknowledge that the Software and the documentation is the property of Nextbase and/or its third-party providers and is protected throughout the world by intellectual property rights laws and treaties, including the United States of America and international copyright treaties.

You further acknowledge that the structure, organization, and code of the Software, for which source code is not provided, are valuable trade secrets of Nextbase and/or its third-party providers and that the Software in source code form remains a valuable trade secret of Nextbase and/or its third-party providers. You agree not to decompile, disassemble, modify, reverse assemble, reverse engineer, or reduce to human readable form the Software or any part thereof or create any derivative works based on the Software or the Documentation. You agree not to copy, rent, lease, sub-license, loan, translate, merge, adapt, vary, alter or modify, the whole or any part of the Software or Documentation nor permit the Software or any part of it to be combined with, or become incorporated in, any other programs.

You agree not to export or re-export the Software or Documentation to any country in violation of the export control laws of the United States of America or the export control laws of any other applicable country.

If you use MyNextbase Connect™ or MyNextbase Player™, you must comply with the applicable terms of use and acceptable use policies, which can be found at www.nextbase.com.

Online Auction Purchases of Non-New Goods

Products purchased through online auctions are not eligible for Nextbase warranty coverage. Online auction confirmations are not accepted for warranty verification. To obtain warranty service, an original or copy of the sales receipt from the original retailer is required. Nextbase will not replace missing components from any package purchased through an online auction.

International Purchases

A separate warranty may be provided by international distributors for devices purchased outside the United Kingdom depending on the country. If applicable, this warranty is provided by the local in-country distributor and this distributor provides local service for your device. Distributor warranties are only valid in the area of intended distribution.

Warranty

This limited warranty gives you specific legal rights, and you may have other legal rights, which vary from state to state (or by country or province). Nextbase™ does not exclude, limit or suspend other legal rights you may have under the laws of your state (or country or province). For a full understanding of your rights you should consult the laws of your state, country or province.

Nextbase Liability extends to the cost of the Dash Cam alone. Any recordings which have not taken place or recoverable from the SD card for whatever reason are not covered by the product warranty. No liability for costs incurred due to corrupt, missing, erased video recordings will be accepted. No claims for additional costs outside the cost of the Dash Cam itself will be accepted.

Nextbase products are warranted to be free from defects in materials or workmanship for one year from the date of purchase, with batteries warranted to be free from defects in materials or workmanship for six months from the date of purchase. Within this period, Nextbase will, at its sole option, repair or replace any components that fail in normal use. Such repairs or replacement will be made at no charge to the customer for parts or labour, provided that the customer shall be responsible for any transportation cost. This Limited Warranty does not apply to:

- (i) cosmetic damage, such as scratches, nicks and dents;
- (ii) consumable parts, such as batteries, unless product damage has occurred due to a defect in materials or workmanship;
- (iii) damage caused by accident, abuse, misuse, water, flood, fire, or other acts of nature or external causes;
- (iv) damage caused by service performed by anyone who is not an authorised service provider of Nextbase;
- (v) damage to a product that has been modified or altered without the written permission of Nextbase, or
- (vi) damage to a product that has been connected to power and/or data cables that are not supplied by Nextbase, or
- (vii) damage to a product that has been connected to 12Vdc directly, having cut off the Cigarette Lighter plug which contains the 12/24Vdc to 5Vdc adaptor. In addition, Nextbase reserves the right to refuse warranty claims against products or services that are obtained and/or used in contravention of the laws of any country.

To the maximum extent permitted by applicable law, the warranties and remedies contained in this limited warranty are exclusive and in lieu of, and Nextbase expressly disclaims, all other warranties and remedies, whether express, implied, statutory, or otherwise, including without limitation any implied warranty of merchantability or fitness for a particular purpose, statutory remedy or otherwise. This limited warranty gives you specific legal rights, and you may have other legal rights, which vary from state to state and from country to country. If implied warranties cannot be disclaimed under the laws of your state or country, then such warranties are limited in duration to the duration of this limited warranty. Some states (and countries and provinces) do not allow limitations on how long an implied warranty lasts, so the above limitation may not apply to you.

In no event shall Nextbase be liable in a claim for breach of warranty for any incidental, special, indirect or consequential damages, whether resulting from the use, misuse or inability to use this product or from defects in the product. Some states (and countries and provinces) do not allow the exclusion of incidental or consequential damages, so the above limitations may not apply to you.

If during the warranty period you submit a claim for warranty service in accordance with this Limited Warranty, then Nextbase will, at its option: (i) repair the device using new parts or previously used parts that satisfy Nextbase's quality standards, (ii) replace the device with a new device or a refurbished device that meets Nextbase's quality standards. Such remedy shall be your sole and exclusive remedy for any breach of warranty. Repaired or replaced devices have a 30 day warranty. If the unit sent in is still under its original warranty, then the new warranty is 30 days or to the end of the original 1 year warranty, whichever is longer.

Before seeking warranty service, please access and review the online help resources available on nextbase.com. If your device is still not functioning properly after making use of these resources, contact a Nextbase Authorised service facility in the original country of purchase or follow the instructions on support at nextbase.com to obtain warranty service.

If you seek warranty service outside of the original country of purchase, Nextbase cannot guarantee that the parts and products needed to repair or replace your product will be available due to differences in product offerings and applicable standards, laws and regulations. In that case, Nextbase may, in its sole discretion and subject to applicable laws, repair or replace your product with comparable Nextbase products and parts, or require you to ship your product to a Nextbase Authorised service facility in the country of original purchase or to a Nextbase Authorised service facility in another country that can service your product, in which case you will be responsible for complying with all applicable import and export laws and regulations and for paying all custom duties, V.A.T., shipping fees and other associated taxes and charges. In some cases, Nextbase and its dealers may be unable to service your product in a country outside of the original country of purchase or return a repaired or replaced product to you in that country due to applicable standards, laws or regulations in that country.

Compliance & Conformity Statements

ACMA RCM Notice to Users in Australia & New Zealand

Having had regard to documents submitted, our Authorised Agent (Global Approvals ACN/ ARBN 25 497 357 455) is satisfied that the in-vehicle accessory product NBDVR222XR complies with the requirements of the relevant ACMA Standards made under the Radiocommunications Act 1992 and the Telecommunications Act 1997. The full compliance declaration, including the details of the applicable standards and documents submitted can be found on our website at <https://www.nextbase.com/certifications>

Canadian ICES-003

This Class B digital apparatus complies with Canadian ICES-003.

NMB-003 du Canada

Cet appareil numérique de la classe B est conforme à la norme NMB-003 du Canada.

EU

EU declaration of conformity is available at the following internet address:
<https://www.nextbase.co.uk/certifications/>

UKCA

UK declaration of conformity is available at the following internet address:
<https://www.nextbase.co.uk/certifications/>

FCC Declaration of Conformity Statement

This device complies with Part 15 of the FCC Rules. Operation is subject to the following two conditions:





- (1) this device may not cause harmful interference, and
- (2) this device must accept any interference received, including interference that may cause undesired operation.

Notes

This equipment has been tested and found to comply with the limits for a Class B digital device, pursuant to Part 15 of the FCC Rules. These limits are designed to provide reasonable protection against harmful interference in a residential installation. This equipment generates, uses and can radiate radio frequency energy and, if not installed and used in accordance with the instructions, may cause harmful interference to radio communications.

However, there is no guarantee that interference will not occur in a particular installation. If this equipment does cause harmful interference to radio or television reception, which can be determined by turning the equipment off and on, the user is encouraged to try to correct the interference by one or more of the following measures:

- Reorient or relocate the receiving antenna.
- Increase the separation between the equipment and receiver.
- Connect the equipment to an outlet on a circuit different from that to which the receiver is connected.
- Consult the dealer or an experienced radio/TV technician for help.
- This appliance and its antenna must not be co-located or operated conjunction with any other antenna or transmitter.
- A minimum separation distance of 20cm must be maintained between the antenna and the person for this appliance to satisfy the RF exposure requirements.

	Supplier's Declaration of Conformity	
		
This Declaration of Conformity is hereby issued according to Chapter 1, Subpart A, Part 2 of Title 47 of the Code of Federal Regulations by:		
The manufacturer	Portable Multimedia Limited trading as Nextbase	
Address	Floor 6, 230 Blackfriars Road, London, SE1 8NW	
Product Name:	Dashcam Kit with RWC and GPS Mount	
Model Numbers:	NBDVR320GXR, NBDVR320GXR-WHT, YVDVR320GXR, NBDVR321GXR, NBDVR320GXRWC, NBDVR220GXR, NBDVR220GXR-WHT, YVDVR220GXR, NBDVR221XR, NBDVR220GXRWC	
This device complies with Part 15 of the FCC Rules. Operation is subject to the following two conditions: (a) This device may not cause harmful interference, and (b) this device must accept any interference received, including interference that may cause undesired operation.		
Responsible Party – US Contact Information		
Nextbase US Branch, 251 Little Falls Drive, City of Wilmington, New Castle County DE19808 nasupport@nextbase.com		
FCC Compliance Statement: The responsible party warrants that each unit of equipment marketed under this Declaration of Conformity will be identical to the unit tested and found acceptable with the standards, and that the records maintained by the responsible party continue to reflect the equipment being produced under such Supplier's Declaration of Conformity and continue to comply within the variation that can be expected due to quantity production and testing on a statistical basis.		
	Portable Multimedia Limited, Caerphilly, Wales, 7th August 2024	
By: Keelan O'Connor (Quality & Compliance Mgr)		

NB-QMS-0050, Issue 1, Apr 2021

FCC CAUTION:

This product does not contain any user-serviceable parts. Repairs should only be made by an authorised Nextbase™ service centre. Unauthorized repairs or modifications could result in permanent damage to the equipment, and void your warranty and your authority to operate this device under Part 15 regulations.

Declarations of Conformity



Declaration Number 20211119-222XR-001

The manufacturer Portable Multimedia Limited trading as Nextbase
Portable Multimedia Limited, Dorna House Two, 52 Guildford Road,
West End, Surrey, GU24 9PW, United Kingdom

Declares under sole responsibility that the product:

Product Name: Dash Cam & Rear Window Camera
Model Number NBDVR320XR, NBDVR320XR-WHT, VYDVR320XR, NBDVR321XR,
NBDVR320XRWC, NBDVR222XR, NBDVR222XR-WHT,
VYDVR222XR, NBDVR223XR, NBDVR224XR, NBDVR222XRWC,
NBDVR320XRWC32GB

Is in conformity with the relevant Union Regulations:	The following relevant harmonised standards have been applied:
2014/30/EU (EMC)	EN 55032:2015 EN 55035:2017
2014/35/EU (LVD)	EN 62368-1:2014+A11:2017
2011/65/EU + 2015/863 (RoHS Directive)	IEC62321-3, -6, -7, -8
2012/19/EU (WEEE Directive)	
EC 1907/2006 (REACH)	

The ESA fulfils the requirements of UNECE R10, in particular the limits defined in paragraphs 6.5, 6.6, 6.7, 6.8, 6.9.

Supplementary information: This product complies with the requirements above and carries the CE mark accordingly.

Mr. Keelan O'Connor
Quality & Compliance Manager

Portable Multimedia Limited,
Caerphilly, Wales,
22nd November 2021



Declaration Number UK20211014-222-001

The manufacturer Portable Multimedia Limited trading as Nextbase
Portable Multimedia Limited, Dorna House Two, 52 Guildford Road,
West End, Surrey, GU24 9PW, United Kingdom

Declares under sole responsibility that the product:

Product Name: Dash Cam & Rear Window Camera
Model Number NBDVR320XR, NBDVR320XR-WHT, VYDVR320XR, NBDVR321XR,
NBDVR320XRWC, NBDVR222XR, NBDVR222XR-WHT,
VYDVR222XR, NBDVR223XR, NBDVR224XR, NBDVR222XRWC,
NBDVR320XRWC32GB

Is in conformity with the relevant Union Regulations:	The following relevant harmonised standards have been applied:
S.I. 2016 No. 1091 (EMC)	EN 55032:2015 EN 55035:2017
S.I. 2016 No. 1101 (Safety)	EN 62368-1:2014+A11:2017
S.I. 2012 No. 3032 (RoHS)	IEC62321-3, -6, -7, -8
S.I. 2013 No. 3032 (WEEE)	
S.I. 2020 no. 1577(REACH)	

This product complies with the requirements above and carries the UKCA mark accordingly.

The ESA fulfils the requirements of UNECE R10, in particular the limits defined in paragraphs 6.5, 6.6, 6.7, 6.8, 6.9.

Mr. Keelan O'Connor
Quality & Compliance Manager

Portable Multimedia Limited,
Caerphilly, Wales,
22nd November 2021

NEXTBASE



NBDVR222XR-ENG-R7