

# User Manual

M27



NANO

[www.nanocam.eu](http://www.nanocam.eu)



---

## •» Table of Contents

---

1. Customer .....	4
2. Introduction .....	5
3. In The Box .....	6
4. Specification .....	7
5. Product Diagram .....	9
6. Buttons And Functions .....	11
7. Installation .....	12
8. Using Dashcam .....	15
9. Playing Video Files Using Dash Cam .....	17
10. Playing Video Files Using Your Smartphone .....	18
11. Playing Video Files Using Your Computer .....	24
12. Menu .....	26
13. Firmware Update .....	32
14. FAQ .....	33

---

## •» 1. Customer Service

---



Defective or damaged item?  
Inaccurate description?  
Missing parts or accessories?  
Performance or quality not adequate?  
Wrong item was sent?



**info@nanocam.eu**

Response in just 24 hours

Contact us before returning the item.  
We will help you resolve any issue asap.

---

## •» 2. Introduction

---

Thank you for purchasing this Nanocam dashcam.

This instruction manual contains information on how to operate your dash cam. Before using your dashcam, we recommend that you read through this manual to ensure correct usage.

To improve the performance of the product, the contents of this manual are subject to change without prior notice.



**Note:**

1. A U3 type microSD card (Not included) is required to use this Dash Cam. For best results, we recommend using our U3 Micro SD branded SD card with your Dash Cam.
2. Be sure to format your microSD card with your dash cam for the first time use.
2. Please ALWAYS connect with power when using. As it is built in Super Capacitor (Only has a 1mAh Lithium Metal Battery used to memorize time).

### •» 3. In The Box

Check the box for each of the following items before installing the dash cam.



Dash camera ×1



Sticky mount ×1



Double-sided  
tape x1



USB Car Charger  
(3.5m/12ft) x1



32GB Micro  
SD Card x1



Electrostatic films  
for front cam x2



Cable clips x5  
Pry tool x1



User manual x1



#### Note:

1. A U3 type microSD card (Not included) is required to use this Dash Cam.
2. To improve the performance of the product, the contents of this manual are subject to change without prior notice.

## •» 4. Specification

Model Name	M27
Screen Size	3 Inch
Aperture	F=1.8
View Angle	150°
Color	Black
Language	English / Deutsch / Français / Español / Italiano / 简体中文 / 繁體中文 / Русский / ไทย
Video Format	MP4
Photo Format	JPG
Video Code	H.264
Video Resolution /Frame Rate	2K (2560x1440@30FPS) 1296P (2304x1296 @30FPS) FHD (1920x1080 @30FPS) Full HD (1280x720 @30FPS)
GPS	Built-in, GPS Player * Windows 7 or higher and Mac OS X (10.10) or higher
G-sensor	Built-in 3-Axis Acceleration Sensor
Loop Recording	Support

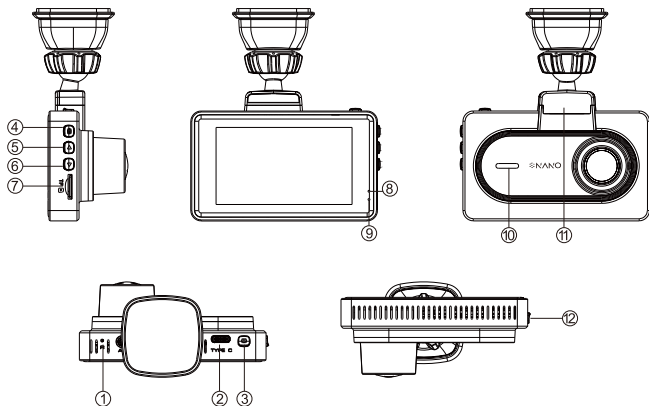
Timelapse Record	Support (Fast Video Playback)
Wi-Fi / Application	Support, Kacam Application
Parking Mode	Support (ONLY works when the dash cam is connected to 3-Lead Hardwire Kit)
Memory	Max support 128GB (Class 10, U3 Speed. Not included)
Microphone	Built-in
Speaker	Built-in
Battery	Built-in Super Capacitor (Only has a 1 mAh Lithium Metal Battery used to memorize time)
Power Interface	5V/1.5A
Working Temperature	-20°C to 70°C (-4°F to 158°F)



**Note:**

1. Please always use a high-speed micro sd card with this dashcam.
2. Please format the sd card in dashcam setting before you first time to use it.
3. Please ALWAYS connect with power when using. As it built in Super Capacitor(Only has a 1mAh Lithium Battery).

## •» 5. Product Diagram



① Reset Hole

② USB charging port

③ Power / OK

④ Menu

⑤ Up

⑥ Down

⑦ microSD card slot

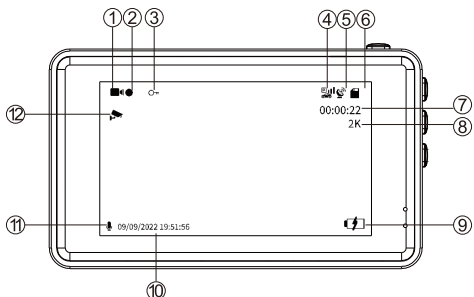
⑧ Power LED Light

⑨ Recording LED Light

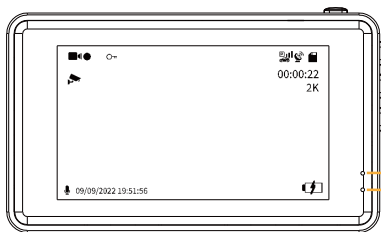
⑩ Speaker

⑪ GPS Mounting bracket

⑫ Ventilation Hole



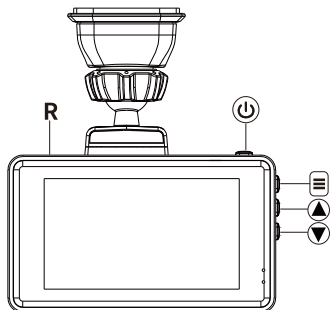
- ① Video Mode                      ② Recording Indicator      ③ Lock Video
- ④ G-sensor                        ⑤ GPS Indicator            ⑥ microSD Card Indicator
- ⑦ Loop Recording Timer      ⑧ Video Resolution        ⑨ Power Indicator
- ⑩ Date/Time                      ⑪ Record Audio            ⑫ Parking Mode



No Blue: The camera is ON but NOT Recording  
 Blinks Blue: The camera is ON and Recording

No Red: The camera is OFF  
 Solid Red: The camera is ON

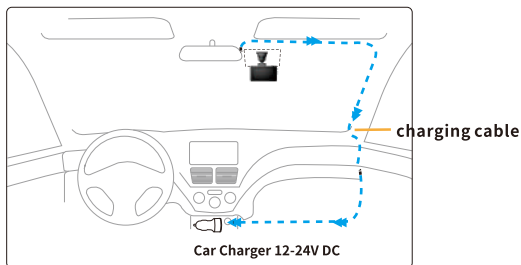
## » 6. Buttons And Functions



Key	Functions
⏻ /OK	<ol style="list-style-type: none"> <li>1. Press Once while the camera is OFF - to Turn ON the camera</li> <li>2. LONG PRESS for 2-Seconds while the camera is ON - to Turn OFF the camera</li> </ol> <ol style="list-style-type: none"> <li>1. Press Once - to Start / Stop Video Recording</li> <li>2. Press Once - to Play / Pause Video while in Play Mode</li> <li>3. Press Once - to Enter / Confirm Specific Settings while in Menu Settings</li> </ol>
☰	<ol style="list-style-type: none"> <li>1. Press Once - to enter / exit menu settings</li> <li>2. LONG PRESS for 2-Seconds - to switch Video Mode / Photo Mode / Play Mode</li> </ol>
▲	<ol style="list-style-type: none"> <li>1. Press Once - to shift camera display mode</li> <li>2. LONG PRESS for 2-Seconds - to Turn ON WiFi, this will turn ON WiFi signals from the dash cam.</li> </ol>
▼	<ol style="list-style-type: none"> <li>1. Press Once - to Turn OFF/ON audio recording</li> <li>2. LONG PRESS for 2-Seconds - to Lock the Current Loop Cycle Video File while Video is being recorded</li> </ol>
<b>R</b>	Reboot the device and default settings

## •» 7. Installation

Install the front camera at the top of the front windshield. Remove any foreign matter and clean and dry the windshield before installation.



1. Insert a suitable microSD card (Class 10, U3, minimum 48/Mbps) in to the Dash Cam, taking care that the gold contacts are facing towards the LCD screen side of the Dash Cam. Push the memory card until it clicks into place. Format your SD card for the first time use.



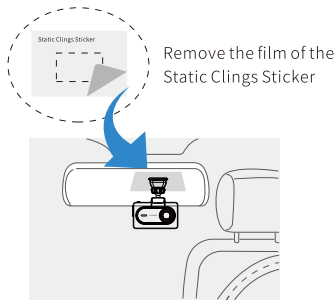
Note:

- Use the edge of a small coin (or similar object) to push the memory card in place if required. Take care that card has 'clicked' into place, a second push inwards will release the memory card.
- For best results, we recommend using Micro SD cards.
- Do not remove or insert the memory card when the Dash Cam is turned on. This may damage the memory card, or the recordings within.

2. Correctly connect the bracket and M27 dash cam .



3. Stick the electrostatic film on your windshield. Peel back the blue cover layer to expose the adhesive surface, ready to mount on your windscreen. Firmly place the mount to the electrostatic film.



4. Connect the charging cable to the Type-C/USB port of the dash cam. Use the pry tool to lift the edges of the windshield trim/molding and tuck in the power cord.

5. Adjust the angle of the lens by the bracket of the front camera. We recommend pointing the lens slightly downwards ( $\approx 10^\circ$  below horizontal), so as to record video with a 6:4 road to background ratio.

6. Turn on the engine. The dashcam will power up and start recording. Video files are stored on the microSD card. When the microSD card fills up, the newest video files will start to replace the oldest video files (called loop recording) – so you will always have the most recent video files.

## Remove or mount the top adhesive attachment

To attach the mount, align the pins on the mount with the holes on the adhesive attachment and slide firmly to the right until you hear the pieces click into place. To remove the top, simply do the reverse, slide it to the left until you can lift it off of the mounting pins.

Ensure the windshield is free of grease and dirt before mounting; if necessary, clean with a warm, clean cloth. Ensure that the Mount and Dash Cam do not obstruct the driver's view.



---

## •» 8. How to Use Dash Cam

---

The camera is designed to power up and record automatically when it receives power. Then saves the video record and turns off automatically when the car shuts off.

### 1. Auto Power ON/OFF:

- ① Plug car charger to cigarette lighter socket.
- ② When the car engine is on, dash cam will turn ON and start recording automatically.

When the car key is turned to LOCK position, dash cam automatically saves the recording and turns OFF.

### 2. Manual Power ON/OFF

Manually Turn ON: Press the power button once.

Manually Turn OFF: Press and hold the power button for at least 2 seconds.



#### Note:

1. Do not remove or insert Cabin camera/Rear camera when the camera is powered on which may damage the camera. It is to improve stability that the dashcam reboots automatically once if it detects that there are different cameras connected.
2. Please ALWAYS connect with power when using. As it is built in Super Capacitor (Only has a 1mAh Lithium Metal Battery used to memorize time).
3. Some trucks/cars' s 12V cigarette outlet is always HOT, which means it provides constant power even when the car is turned off and locked. If this is the case for your vehicle, then the auto ON/OFF feature will not work. And if you leave the camera continuously recording when the car is turned off, then it will drain your car/truck' s battery and you might not have enough power to start your car for next time. To Remedy this situation, you can do one of the two options:

- ① Hardwire your dash cam to your car's fuse box with 3-Lead Auto Trigger Hardwire Kit.
- ② Change the connection in the fuse box for your 12V outlet to socket which only supplies power when car key is turned to ACC or ON position.

## Time Zone Settings

### Please set Time Zone in system setting at first.

The settings that influence the displayed time & date will be applied upon receiving a GPS connection.

Some examples of GMT time off sets are:

- GMT-7: Los Angeles    - GMT-4: New York    - GMT+10: Sydney

Please make sure to adjust time zone setting during standard vs. daylight savings time.

If you are unsure of your GMT off set please look up your city on

<http://www.greenwichmeantime.com/time-zone/usa/>

USA Time Zones	When Daylight Savings Ends Nov - March	When Daylight Savings Begins March - Nov
Hawaii	GMT (-10:00)	
Alaska	GMT (-9:00)	GMT (-8:00)
Pacific Time Zone	GMT (-8:00)	GMT (-7:00)
Mountain Time Zone	GMT (-7:00)	GMT (-6:00)
Central Time Zone	GMT (-6:00)	GMT (-5:00)
Eastern Time Zone	GMT (-5:00)	GMT (-4:00)

UK Time Zones	British Summer Time	British Winter Time
	GMT/UTC +1	GMT/UTC ±0

## •» 9. Playing Video Files Using Dash Cam

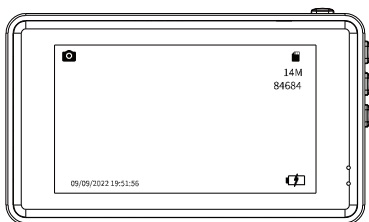
First press once the ‘电源/OK’ to stop video recording.  
LONG PRESS ‘Menu’ for 2-Seconds - to switch Video Mode /Photo Mode / Playback Mode.

In the Playback Mode, you can press once the ‘⏻/OK’ button to play/stop video.  
you can press once the ‘☰ Menu’ button to delete or protect related files.

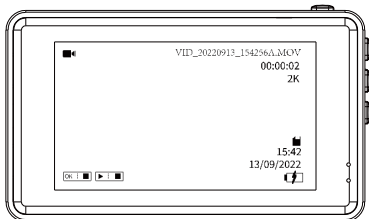
1. VIDEO MODE



2. PHOTO MODE



3. PLAYBACK MODE



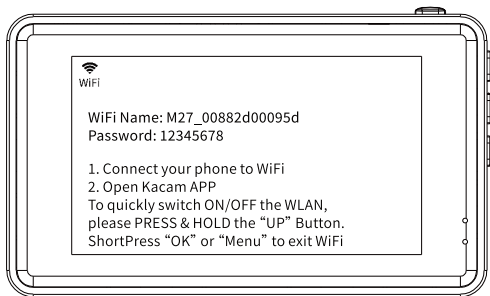
## » 10. Playing Video Files Using Your Smartphone

### Check real-time video using your smartphone

1. Search for the Kacam App in Google Play Store or Apple App Store and install it on your smartphone.



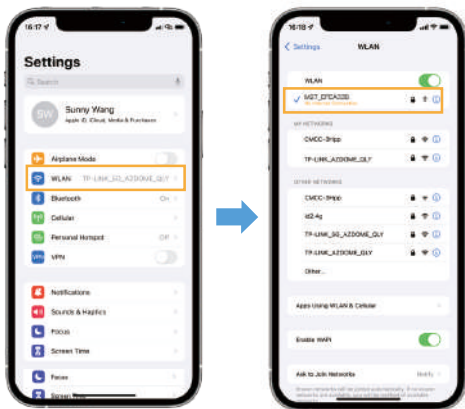
2. Turn on WiFi of the dash cam: Long press Down Button for two seconds to turn on the WiFi Mode.



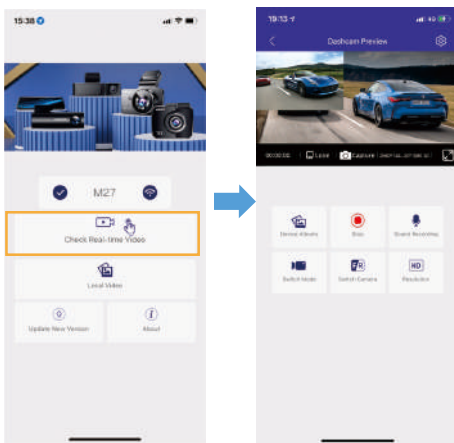
3. Turn on WiFi of your phone and connect: Go to Phone's Settings > WiFi > Select WiFi of the dashcam. After it's connected to the WiFi, it will say 'No Internet Connection' which was normal. Because dash cam WiFi is ONLY for video/photo transfer function, NOT made to broadcast footage over the cloud or internet, please ignore the prompt.

**WiFi Name SSID: M27\_\*\*\*\*\***

**Default PASSWORD: 12345678**

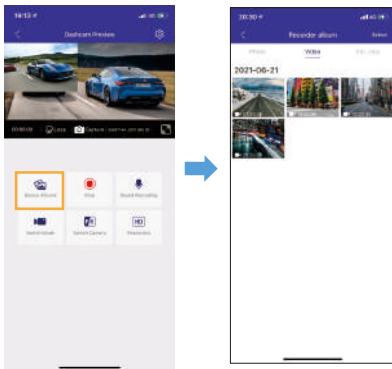


4. Open the Kacam App to tsp << Check Real-time Video >>. Now you can view in real-time the video currently being recorded by connecting your smartphone to the dashcam via Wi-Fi Direct.

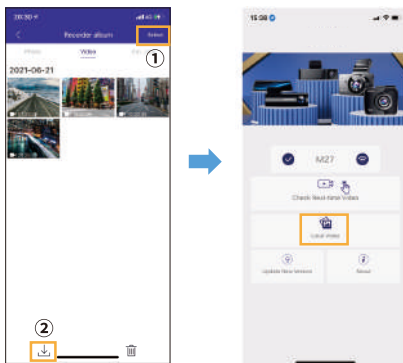


## Download the video files into your smartphone

1. Go to Dashcam Preview interface. Please STOP recording first, then press the 'Device Album' to get Photo, Video, Emergency files.



2. Select the video files to download into your phone, then you can find these downloaded video files in APP original interface menu named 'Local Video'. However, it will take a bit of time to download one video file.



 **Note:**

1. You can't operate the dash cam when your phone is connected to WiFi.
2. WiFi Direct lets you directly connect your smartphone to your dash cam via WiFi within a range of 10FT.
3. You can only view the map with GPS data after you download the video to your smartphone.

**The app won't show the live video on your phone. It only shows a picture of the beach?**

The cellular data will cause the live video not to be viewed. If the APP won't show the live video, please disable the 'Kacam' cellular data of your phone. Sure that the Local Network of the 'Kacam' is turned on.

- ① For Latest iOS System: Setting→Kacam→Click 'Wireless Data' → Select 'WLAN' .
- ② For Older iOS System: Setting→Kacam→Disable the 'Cellular Data'



## What is a WiFi Feature?

The WiFi feature has been designed so you can pair your dash camera wirelessly with your smartphone and access your recording instantly from the dash cam. Here you can view, download and share your videos easily with your friends and family. Just like how you would connect your Bluetooth speaker to your smartphone for wireless music play, the same way dash cameras use WiFi signal (instead of a Bluetooth) to pair your smartphone with Nanocam M27.

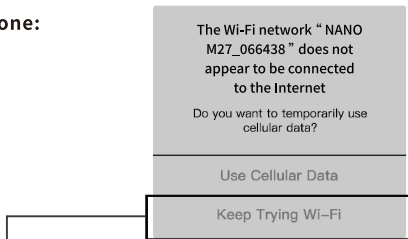
## Can I watch the videos around my car remotely?

NO. Nanocam M27 dash cam is NOT made to broadcast footage over the cloud or internet. It is NOT a cloud or an IP camera and it is NOT meant to do that. You can get live video and footage on dash cam's APP as long as you stay within the 10FT range from the dashcam.

## What is the WiFi Range?

The WiFi signal range is about 10FT when there are NO obstructions in the middle. Please NOTE that just like your home WiFi network, you don't have WiFi signal outside your home, the same way, WiFi range is 10FT from this small device.

## For iPhone:

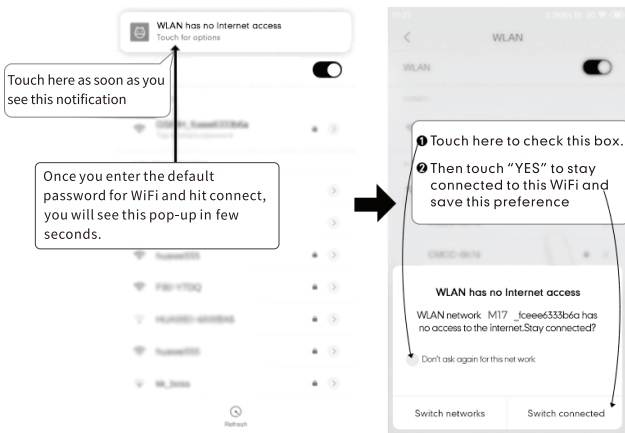


If you get this pop up for your iPhone while using WiFi feature, make sure to tap on 'Keep Trying WiFi'. Otherwise the camera will get disconnected from the WiFi and then you will have to forget the WiFi and then start to pair again to make it work again.

## For Android phones:

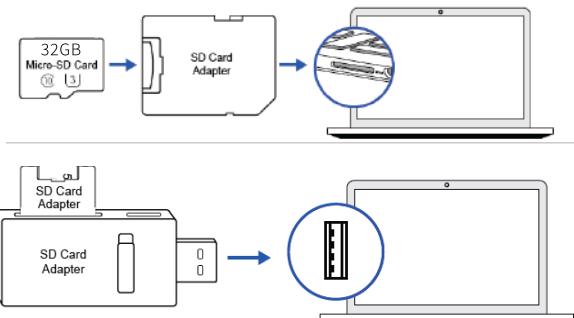
When installing the Kacam App, it will have two pop-up prompts, select 'While using the App' to allow Kacam to access this device's location, and select 'Allow' to allow Kacam to access photos and media on your device.

There is one extra step you will have to take for the first time. Once you connect to the WiFi of M27, it will say 'No Internet'. Which is fine. Wait about 10-15 seconds until you see the below pop up or notification. You just have to tap on the pop up notification that will show up in few seconds to select that you still want to stay connected even though there is NO Internet. Once you select this OK, you are set to go.

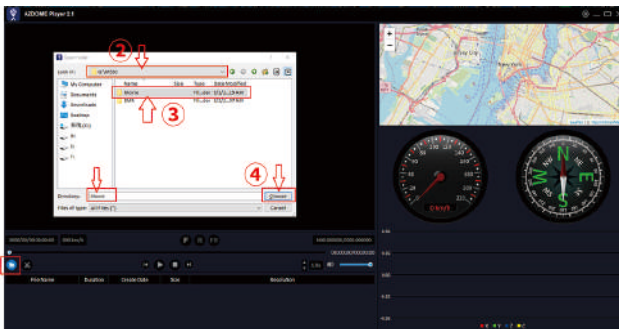


## » 11. Playing Video Files Using Your Computer

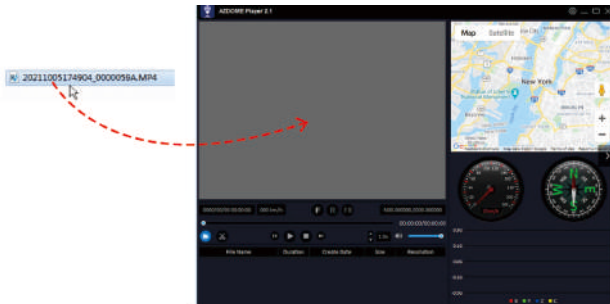
1. Remove the microSD card from the dashcam.
2. Insert the card into the microSD card reader and connect it to a computer.



3. Please download the GPS Player by scanning the QR Code :
4. Install the AZDOME GPS Player on your computer. (Note: Please close or ignore the prompt of the anti-virus software, we confirm that it will not bring any security impact to your computer.)
5. You can click the ‘Open Files’ button to browse and select the Movie or EMR folder of the microSD card on the GPS Player. It will show all files in the Movie or EMR folder. Or you can also drag the video files directly to the launcher screen.
6. There are two ways to play video.  
A, Click File-Open icon to choose the folder which you want to play, click to start play.  
(Note that you can ONLY select one folder to play and see no video files)



B, Select from 'My Computer' and find the memory card disk, choose the video file you want to play, you can drag and drop the file directly to the player. You can get the GPS information on the player.



File named \*\*\*\*\* \_ \*\*\*\*\*A = Front camera video file

## •» 12. Menu



### **Resolution — 2K 2560\*1440(Default)/ 2304\*1296/ FHD 1920\*1080/ HD 1280\*720**

Allow to choose the desired video resolution and fps(frames per second). Higher resolution and fps videos result in smoother videos, but also take more storage space.

### **Loop Recording — 1min(Default)/ 3mins/ 5mins**

Here select the length(1/3/5 min) of each video clip for the loop recording.

This function allows the dash cam to continuously record.

Please notice: The dash cam will keep deleting the oldest files automatically when memory card gets full so that it can keep recording over and over.

### **Record Audio — On(Default)/Off**

Turn On/Off the microphone for video recording.

### **Rear Cam Mirror — On(Default)/Off**

This feature works only for the rear camera image.

On: The image of the rear camera is as same as in the rear mirror , what on the left in reality --> on the right of the dash cam screen.

Off: The rear camera image is as same as what you see, what on the left in reality --> on the left of the dash cam screen

Note: rear camera is not included in the package

### **24HR Parking Mode — On/ Off(Default)**

This function will ONLY work when 3-Lead Hardwire Kit is installed properly. When the car crashes, It will automatically power on and record & lock the video for 1 minute, then save it to Emergency Video in playback file, and then turn off, so that it won't be overwritten by loop recording.

### **G-Sensor — Off/ High/ Middle(Default)/ Low**

G-sensor is a 3-axis impact gravitational accelerometer, designed to detect physical and gravitational forces on the dash cam. Once G-sensor has been triggered due to physical or gravitational impact force on the camera, the current video file will be locked as an emergency file so it won't be deleted by loop cycle function. The higher the G-Sensor sensitivity is, the less force will be needed to trigger automatic file protection.

### **Exposure —-3.0/ -2.0/ -1.0/ +0.0(Default)/ +1.0/ +2.0/ +3.0**

To adjust video exposure setting for either brighter or darker video according to your preference.

### **Video Stamp — Off/On(Default)**

Turn On/Off the Time Stamp / GPS Stamp / Speed Stamp / LOGO Stamp shown on recorded files.



### **WiFi— Off(default )/On**

Turn On/Off the WiFi of the dash cam.

WiFi Name SSID: M27\_\*\*\*\*\*

Default PASSWORD: 12345678



#### **Note:**

It is available for devices running Android 5.0 and higher, or iOS 9.0 and higher. You can't operate the dash cam when your phone is connected to WiFi.

### **GPS Info**

Check the satellite number / Longitude / Latitude / Speed.

### **Speed Unit — KM/H/MPH(default)**

Choose between MPH and KMH.

### **Frequency — 50HZ/ 60HZ(Default)**

According to the power supply specification used in your country.

60HZ-Used in USA, North America.

50HZ-Used in Europe, most Asian Countries.

**Date time**

Adjust the time & date as required.

Note: Time and date settings will be overwritten upon satellite connection.

**Time ZoneTimezone Setting: UTC -12, UTC 0, UTC +12,  
UTC -07:00(Default)**

Manually adjust your time zone to adjust your Dash Cam's time display. The settings that influence the displayed time & date will be applied upon receiving a GPS connection.

**Data Format — mm/dd/yyyy(Default), dd/mm/yyyy, yyyy/mm/dd**

Allows you to set the format of the date finally displayed.

**Language — Multilingual, English(Default)**

Allow to choose your desired language for dash-cam system.



### **Screen Saver — Off/ 1(Default)/3/5 minutes**

**Off:** It will make the screen always stay ON.

**1/3/5 Minutes:** It will shut down the screen after 1/3/5 minutes without any interaction. With the screen off, recording will continue as normal. Press the button to re-open the screen.

### **Car License Plate**

This feature will allow you to insert custom vehicle ID or Driver ID to be stamped on video.

### **Prompt tone — On(default )/Off**

To switch on/ off the key tone.

### **Speaker Volume— Low/Medium(default )/High**

Adjust the volume of the internal speaker.

## **Storage Info**

Storage information of memory card can be found here.

## **Format**

The formatting process will make sure that the card's file system format is optimized for the camera.

Note: For stable performance, it is recommended that you format the memory card every 1-2 months.

## **Reset Setup**

Reset the Dash Cam to default settings. Your recordings will not be affected.

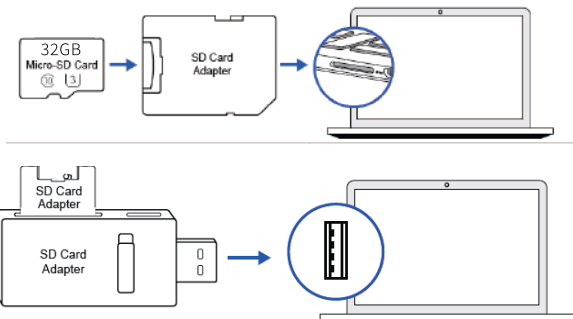
## **Version**

To check the current firmware in the dash cam. You'll need this necessary information to check if newer version firmware is available to update.

On the computer visit the website (<https://www.nanocam.eu>) to check for M27 Firmware Upgrade Guide.

## •» 13. Firmware Update

1. Remove the microSD card from the dashcam.
2. Insert the card into the microSD card reader and connect it to a computer.



3. Download the latest M27 Firmware from [www.nanocam.eu](http://www.nanocam.eu) on your computer.
  4. Unzip the downloaded firmware (Zip file) and copy the 'JL\_AC5X.bfu' firmware file to the root directory of microSD card.
  4. Connect the camera to the car charger. Press the POWER button to start the firmware update process. You should see the upgrade progress bar which means your Nanocam camera is updating the new firmware.
- Please NOTE:
- The firmware update may take up to 1 or 2 mins. So please be patient. Make sure the POWER does NOT get disconnected while the firmware is being updated. Once the firmware is updated, the camera will turn ON automatically.
5. You can now check the latest firmware version by going into the camera's menu> Version.

---

## •» 14. FAQ

---

### **V1: The camera displays "Memory error" or "Please insert microsd card". The microSD card has been inserted into the camera.**

A: This camera requires an A-brand SD card (Lexar, Samsung, exceed or Sandisk). Cheap or unbranded SD cards often cannot be read by the camera.

### **V: Dates and times change all the time.**

A: Charge the camera for at least 6 hours and then go to the camera system Settings:

System Settings > Time Zone Settings > Set the Correct Time Zone > Click OK.  
The date and time of receiving the gps signal will be updated.

### **V3: Why do cameras display blurry images?**

A: Remove the protective film from the lens, clean the lens, and make sure the windshield is clean.

### **V4: Will the camera be hot?**

A: It's normal for the camera to get hot. Since the video is recorded at high speed, this ensures that the camera gets a little hot while in use. (No more than 70 degrees)

### **V5: Dashcams receive power only when they are connected to a computer?**

A: The nutrition of cigarettes didn't seem to work then. Check the wiring of the car tachograph.

### **V6: During playback, the dashcam sound was out of sync with the video:**

A: The codec on your computer may not be compatible or updated.

**V7: Video files can't play on my computer?**

A: The video file on the dashcam is in MP4 format. Make sure your computer is compatible with playing MP4 files.

**V8: Does the video file have no sound?**

A: Make sure the Record Audio setting is turned on. When recording a video, press the next drop-down button to turn off the microphone.

Apple logo & App Store are trademarks of Apple Inc., Google logo and Google Play are trademarks of Google Inc.



**info@nanocam.eu**

Response in just 24 hours

**Product** | M27 Nanocam  
**Company** | Nanocam  
**Address** | Molenbeekstraat 18H, 1078XD Amsterdam, The Netherlands  
**Product Warranty** | One-Year Limited Warranty  
**Customer Support** | info@nanocam.eu  
[www.nanocam.eu](http://www.nanocam.eu)



FCC ID: 2ASWVM27